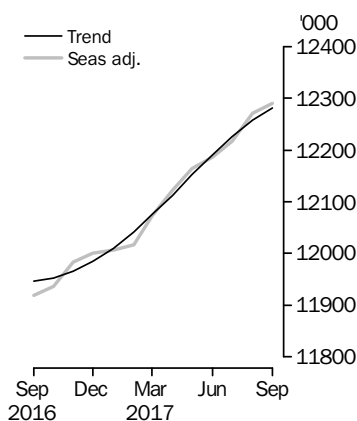


LABOUR FORCE

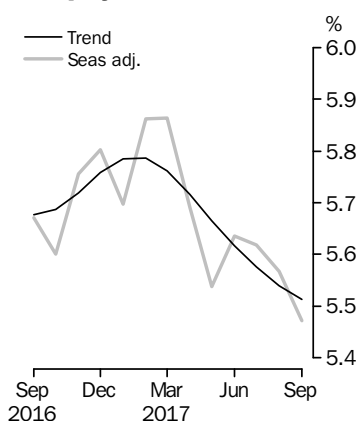
AUSTRALIA

EMBARGO: 11.30AM (CANBERRA TIME) THURS 19 OCT 2017

Employed Persons



Unemployment Rate



INQUIRIES

For further information about these and related statistics, email <client.services@abs.gov.au> or contact the National Information and Referral Service on 1300 135 070.

KEY FIGURES

	Aug 2017	Sep 2017	Aug 17 to Sep 17	Sep 16 to Sep 17
Trend				
Employed persons ('000)	12 257.5	12 281.2	23.8	2.8 %
Unemployed persons ('000)	718.8	716.6	-2.2	-0.3 %
Unemployment rate (%)	5.5	5.5	0.0 pts	-0.2 pts
Participation rate (%)	65.2	65.2	0.1 pts	0.6 pts
Seasonally Adjusted				
Employed persons ('000)	12 270.4	12 290.2	19.8	3.1 %
Unemployed persons ('000)	723.3	711.5	-11.8	-0.7 %
Unemployment rate (%)	5.6	5.5	-0.1 pts	-0.2 pts
Participation rate (%)	65.2	65.2	0.0 pts	0.8 pts

KEY POINTS

TREND ESTIMATES (MONTHLY CHANGE)

- Employment increased 23,800 to 12,281,200.
- Unemployment decreased 2,200 to 716,600.
- Unemployment rate remained steady at 5.5%, following a revised August 2017 estimate.
- Participation rate increased by less than 0.1 pts, but remained at 65.2% in rounded terms.
- Monthly hours worked in all jobs increased 3.1 million hours (0.2%) to 1,714.5 million hours.

SEASONALLY ADJUSTED ESTIMATES (MONTHLY CHANGE)

- Employment increased 19,800 to 12,290,200. Full-time employment increased 6,100 to 8,398,200 and part-time employment increased 13,700 to 3,892,000.
- Unemployment decreased 11,800 to 711,500. The number of unemployed persons looking for full-time work decreased 10,600 to 487,100 and the number of unemployed persons only looking for part-time work decreased 1,200 to 224,400.
- Unemployment rate decreased 0.1 pts to 5.5%.
- Participation remained steady at 65.2%.
- Monthly hours worked in all jobs increased 11.2 million hours (0.7%) to 1,718.2 million hours.

NOTES

FORTHCOMING ISSUES

<i>ISSUE</i>	<i>RELEASE DATE</i>
October 2017	16 November 2017
November 2017	14 December 2017
December 2017	18 January 2018
January 2018	15 February 2018
February 2018	22 March 2018
March 2018	19 April 2018

.....

UPDATE ON TIMING OF MAJOR REBENCHMARKING

For an update on the revised timing of the major rebenchmarking please refer to "What's new in the Labour Force".

ROUNDING

Estimates of changes shown on the front cover and used in the commentary have been calculated using unrounded estimates, and may be different from, but are more accurate than, movement obtained from the rounded estimates. The graphs on the front cover also depict unrounded estimates.

SAMPLING ERROR

The estimates in this publication are based on a sample survey. Published estimates and movements are subject to sampling variability. Standard errors give a measure of sampling variability. The interval bounded by two standard errors is the 95% confidence interval, which provides a way of looking at the variability inherent in estimates. There is a 95% chance that the true value of the estimate lies within that interval.

MOVEMENTS IN SEASONALLY ADJUSTED SERIES BETWEEN AUGUST 2017 AND SEPTEMBER 2017

.....

	<i>Monthly change</i>	<i>95% Confidence interval</i>	

Total Employment	19 800	-39 600	to 79 200
Total Unemployment	-11 800	-48 800	to 25 200
Unemployment rate	-0.1 pts	-0.3 pts	to 0.1 pts
Participation rate	0.0 pts	-0.4 pts	to 0.4 pts

.....

David W. Kalisch
Australian Statistician

LABOUR FORCE COMMENTARY SEPTEMBER 2017

NATIONAL ESTIMATES

TREND ESTIMATES

Australia's trend estimate of employment increased by 23,800 persons in September 2017, with:

- the number of unemployed persons decreasing by 2,200 persons;
- the unemployment rate remaining steady at 5.5 per cent, following a revised August 2017 estimate;
- the participation rate increasing by less than 0.1 percentage points, but remaining at 65.2 per cent in rounded terms; and
- the employment to population ratio increasing by 0.1 percentage points, but remaining at 61.6 per cent in rounded terms.

Over the past year, trend employment increased by 335,500 persons (or 2.8 per cent). Over the same 12 month period the trend employment to population ratio, which is a measure of how employed the population (aged 15 years and over) is, increased by 0.7 percentage points to 61.6 per cent, the highest it has been since August 2012.

In monthly terms, trend employment increased by 23,800 persons between August 2017 and September 2017. This represents an increase of 0.19 per cent, which is above the monthly average growth rate over the past 20 years of 0.16 per cent.

Trend full-time employment increased by 16,000 persons in September, while part-time employment also increased by 7,700 persons. Compared to a year ago, there are 271,400 more persons employed full-time and 64,100 more persons employed part time. The part-time share of employment decreased 0.3 percentage points over the last 6 months, from 31.9 per cent to 31.6 per cent.

The trend estimate of monthly hours worked in all jobs increased by 3.1 million hours (or 0.18 per cent) in September 2017, to 1,714.5 million hours. Monthly hours worked have increased by 2.9 per cent over the past year, slightly above the estimate of employed persons. As a result, the average hours worked per employed person is around 139.6 hours per month, or around 33.2 hours per week.

The trend unemployment rate decreased by less than 0.1 percentage points, but remained at 5.5 per cent in rounded terms in September 2017 (after the August number was revised down to 5.5 per cent). This is the lowest the unemployment rate has been since March 2013. The number of unemployed persons decreased by 2,200, a seventh consecutive decrease.

The trend participation rate increased by less than 0.1 percentage points to remain at 65.2 per cent in rounded terms in September 2017. The male participation rate was 70.8 per cent while the female participation rate reached a record high of 59.9 per cent.

The labour force includes the total number of employed and unemployed persons. Over the past year, the labour force increased by 333,300 persons (2.6 per cent). This rate of increase was above the rate of increase for the total Civilian Population aged 15 years and over (323,500 persons, or 1.6 per cent).

The trend participation rate for 15-64 year olds, which controls (in part) for the effects of an ageing population, increased by 0.1 percentage points to 77.7 per cent in September 2017.

TREND ESTIMATES
continued

The trend participation rate for 15-24 year olds increased by 0.3 percentage points to 67.7 per cent in September 2017. The unemployment rate for this group decreased by less than 0.1 percentage points to 12.7 per cent in September 2017 and decreased by 0.3 percentage points over the year.

The trend series smooths the more volatile seasonally adjusted estimates and provide the best measure of the underlying behaviour of the labour market.

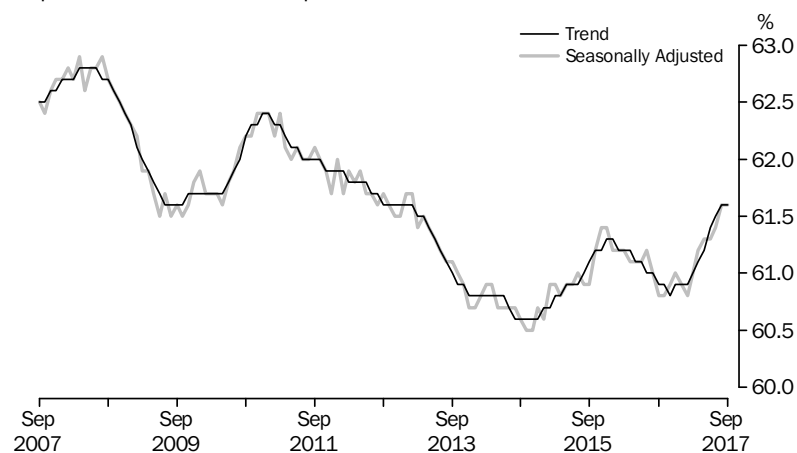
SEASONALLY ADJUSTED ESTIMATES

Seasonally adjusted employment increased by 19,800 persons from August to September 2017. The underlying composition of the net change was an increase of 6,100 persons in full-time employment and a 13,700 increase in part-time employment. Since September 2016, full-time employment has increased by 315,900 persons, while part-time employment has increased by 55,600 persons.

Seasonally adjusted monthly hours worked in all jobs increased by 11.2 million hours in September 2017 to 1,718.2 million hours.

The seasonally adjusted employment to population ratio remained steady at 61.6 per cent in September 2017, representing an increase of 0.9 percentage points from the same time last year.

GRAPH 1, EMPLOYMENT TO POPULATION RATIO, PERSONS, September 2007 to September 2017



The seasonally adjusted unemployment rate decreased by 0.1 percentage points to 5.5 per cent in September 2017. The labour force participation rate remained steady at 65.2 per cent.

STATE AND TERRITORY ESTIMATES
TREND ESTIMATES

In September 2017, increases in trend employment were observed in all states and territories except the Northern Territory where employment decreased by 800 persons. The largest increases were in New South Wales (up 7,600 persons) and Queensland (up 7,500 persons).

Similarly, over the past year, increases in employment were also observed in all states and territories except Northern Territory (down 3,200 persons). The largest increases were in Victoria (up 96,500 persons), Queensland (up 95,900 persons) and New South Wales (up 79,100 persons). The highest annual employment growth rates

TREND ESTIMATES
continued

were in Queensland (4.1 per cent), Tasmania (3.9 per cent), Victoria (3.1 per cent) and Western Australia (2.9 per cent).

The largest increase in the trend unemployment rate was seen in the Northern Territory (up 0.2 percentage points). The largest decreases were recorded in South Australia (down 0.2 percentage points) and Queensland (down 0.1 percentage points).

The trend participation rate increased in all states and territories except the Northern Territory (down 0.3 percentage points) and South Australia (down 0.1 percentage points). The largest increase was in the Australian Capital Territory (up 0.2 percentage points), followed by New South Wales, Queensland and Western Australia, which all recorded increases of 0.1 percentage points.

SEASONALLY ADJUSTED
ESTIMATES

In seasonally adjusted terms, the largest increase in employment was in New South Wales (up 21,100 persons), followed by Victoria (up 8,900 persons) and Western Australia (up 8,300 persons).

The largest increase in the seasonally adjusted unemployment rate was in Queensland (up 0.2 percentage points). The largest decrease in the seasonally adjusted unemployment rate was recorded in New South Wales and Tasmania (both down 0.3 percentage points), followed by Western Australia (down 0.2 percentage points).

The largest increase in the seasonally adjusted participation rate occurred in Western Australia (up 0.2 percentage points), while the largest decreases in the seasonally adjusted participation rate were observed in Queensland and South Australia (both down 0.1 percentage points).

Seasonally adjusted estimates are not published for the two territories.

TABLE 1, UNEMPLOYMENT RATE, STATES AND TERRITORIES

	TREND		SEASONALLY ADJUSTED	
	
	<i>August</i>	<i>September</i>	<i>August</i>	<i>September</i>
	%	%	%	%
New South Wales	4.8	4.8	4.9	4.6
Victoria	6.0	6.0	6.1	6.0
Queensland	6.0	5.9	5.7	5.9
South Australia	6.0	5.8	5.7	5.8
Western Australia	5.6	5.6	5.9	5.7
Tasmania	6.0	5.9	6.0	5.7
Northern Territory	3.9	4.1	np	np
Australian Capital Territory	4.4	4.4	np	np
Australia	5.5	5.5	5.6	5.5

np not available for publication but included in totals where applicable, unless otherwise indicated

INSIGHTS FROM THE ORIGINAL DATA

INSIGHTS FROM THE ORIGINAL DATA *SAMPLE COMPOSITION*

The Labour Force Survey sample can be thought of as comprising eight sub-samples (or rotation groups), with each sub-sample remaining in the survey for eight months, and one rotation group "rotating out" each month and being replaced by a new group "rotating in". This sample rotation is important in ensuring that seven-eighths of the sample are common from one month to the next, to ensure that changes in the estimates reflect real changes in the labour market, rather than the sample. In addition, the replacement sample is generally selected from the same geographic areas as the outgoing one, as part of a representative sampling approach.

When considering movements in the original estimates, it is possible to decompose the sample into three components:

- the matched common sample (survey respondents who responded in both August and September);
- the unmatched common sample (survey respondents who responded in September but who did not respond in August, or vice versa); and
- the incoming rotation group (survey respondents who replaced respondents who rotated out in August).

The detailed decomposition of each of these movements is included in the data cube 'Insights From the Original Data'.

In considering the three components of the sample, it is important to remember that the matched common sample describes the change observed for the same respondents in August and September, while the other two components reflect differences between the aggregate labour force status of different groups of people.

While the rotation groups are designed to be representative of the population, the outgoing and incoming rotation groups will almost always have somewhat different characteristics, as a result of the groups representing a sample of different households and people. The design of the survey, including the weighting and estimation processes, ensures that these differences are generally relatively minor and seeks to ensure that differences in characteristics of rotation groups do not affect the representativeness of the survey and its estimates. Monthly estimates are always designed to be representative of their respective months, regardless of the relative contribution of the three components of the sample.

INCOMING ROTATION GROUP

In original terms, the incoming rotation group in September 2017 had a higher employment to population ratio than the group it replaced (61.7 per cent in August, up to 62.3 per cent in September 2017), and was higher than the ratio for the entire sample (61.6 per cent).

The full-time employment to population ratio of the incoming rotation group was higher than the group it replaced (41.6 per cent in August 2017, up to 41.7 per cent in September 2017), and lower than the ratio for the entire sample (41.9 per cent).

The unemployment rate of the incoming rotation group was 0.2 percentage points higher than the whole sample (5.5 per cent, compared to 5.3 per cent), and it replaced a group with a lower rate (5.4 per cent in August). Its participation rate was above that of the sample as a whole (66.0 per cent, compared to 65.1 per cent), and also the group it replaced (65.2 per cent in August).

OUTGOING ROTATION
GROUP

In looking ahead to the October 2017 estimates, the outgoing rotation group in September 2017, which will be replaced by a new incoming rotation group in October 2017, has a higher employment to population ratio (62.8 per cent in September 2017) compared to the sample as a whole (61.6 per cent). The full-time employment to population ratio (43.5 per cent) is higher than the ratio for the entire sample (41.9 per cent).

In original terms, the unemployment rate for the outgoing rotation group in September 2017 was 4.8 per cent which was lower than the whole sample at 5.3 per cent. The participation rate for the outgoing rotation group in September 2017 was 66.0 per cent, which was higher than the rate for the whole sample (65.1 per cent).

THE IMPORTANCE OF
TREND DATA

As the gross flows and rotation group data are presented in original terms they are not directly comparable to the seasonally adjusted and trend data discussed elsewhere in the commentary, and are included to provide additional information for the original data. Since the original data are unadjusted, they have a considerable level of inherent sampling variability, which is specifically adjusted for in the trend series. The trend data provide the best measure of the underlying behaviour of the labour market and are the focus of the commentary in this publication.

WHAT'S NEW IN THE LABOUR FORCE

CHANGE TO THE TIMING OF THE MAJOR REBENCHMARKING OF LABOUR FORCE ESTIMATES

The ABS has reviewed the timing of when the major rebenchmarking of Labour Force estimates will occur, following the 5-yearly Census rebasing process and revisions to population estimates. Traditionally, this process has occurred more than two years after the Census, to coincide with the availability of final rebased population estimates.

For this cycle, the ABS has decided, after consultation with a range of key users of Labour Force statistics, to undertake an initial major rebenchmarking to preliminary rebased population estimates, to coincide with the release of *Labour Force, Australia - Rebenchmarked Estimates, October 2017* (cat. no. 6202.0.55.003) on 7 December. This will be followed by a second major rebenchmarking a year later, in December 2018.

This approach is consistent with the guiding principle that has underpinned quarterly rebenchmarking since it was introduced in August 2015 – that is, to ensure the best available population information is used in Labour Force benchmarks. It also reflects the increased timeliness in which major rebenchmarking can be undertaken, following the introduction of the quarterly methodology, and increased appetite of users of Labour Force statistics for regular revisions.

The ABS believes that most of the differences between 2011-based and 2016-based benchmarks should be observed in the initial rebenchmarking release, in December 2017. Revisions that will occur in December 2018, when final rebased population estimates are used in a second major rebenchmarking process, should be generally minor.

In this issue of *Labour Force, Australia* (cat. no. 6202.0), the ABS has continued to use 2011-based Labour Force Survey benchmarks. 2011-based benchmarks will also be used in the October issue, which will be released on 16 November 2017, ahead of the rebenchmarking process in December 2017.

GM1 DATA CUBE

Commencing this month, *Labour Force, Australia* (cat no 6202.0), has published the GM1 data cube in pivot table format in addition to the Summary Record Database (SRD) format which is being phased out.

The ABS will continue to release the GM1 data cube in both formats for twelve months, to allow users to transition to using pivot tables, after which it will cease publishing Labour Force data cubes in SRD format.

This pivot table will increase the accessibility of Labour Force data and provide a long term replacement for the unsupported SRD format. The pivot table reflects the design and utility of the existing SRD format as closely as possible. In addition, the inclusion of a Comma Separated Values (CSV) source worksheet in the pivot table should facilitate the data's use in a wide range of software.

The phasing out of the GM1 SRD represents the final stage of the Labour Force statistics transition from the SRD format, which has already been completed for all other products.

LABOUR FORCE STATUS (AGED 15 YEARS AND OVER), Australia: Trend

	EMPLOYED				UNEMPLOYED			LABOUR FORCE	
	Full-time	Part-time	Total	Employment to population ratio	Looked for full-time work	Total	Unemployment rate	Total	Participation rate
PERSONS									
September 2014	8 005.2	3 530.4	11 535.6	60.6	545.9	767.8	6.2	12 303.4	64.6
September 2015	8 143.6	3 655.0	11 798.5	61.1	543.4	762.9	6.1	12 561.4	65.0
2016									
September	8 131.8	3 814.0	11 945.7	60.9	499.9	718.8	5.7	12 664.6	64.6
October	8 133.5	3 819.6	11 953.2	60.9	505.7	720.7	5.7	12 673.9	64.5
November	8 141.3	3 824.2	11 965.4	60.8	512.6	725.9	5.7	12 691.3	64.5
December	8 154.4	3 829.9	11 984.3	60.9	518.5	732.3	5.8	12 716.6	64.6
2017									
January	8 173.4	3 836.8	12 010.1	60.9	521.4	737.5	5.8	12 747.6	64.6
February	8 197.3	3 843.5	12 040.9	60.9	520.5	739.5	5.8	12 780.4	64.7
March	8 227.4	3 847.5	12 074.9	61.0	516.5	738.2	5.8	12 813.1	64.8
April	8 262.9	3 849.6	12 112.4	61.1	510.2	734.4	5.7	12 846.8	64.8
May	8 301.1	3 851.3	12 152.4	61.2	503.8	729.7	5.7	12 882.1	64.9
June	8 335.8	3 855.4	12 191.2	61.4	498.6	725.5	5.6	12 916.7	65.0
July	8 364.3	3 862.1	12 226.4	61.5	494.5	721.9	5.6	12 948.4	65.1
August	8 387.1	3 870.4	12 257.5	61.6	491.3	718.8	5.5	12 976.3	65.2
September	8 403.1	3 878.1	12 281.2	61.6	489.0	716.6	5.5	12 997.8	65.2
MALES									
September 2014	5 161.6	1 073.6	6 235.2	66.5	323.6	409.9	6.2	6 645.1	70.9
September 2015	5 217.3	1 122.8	6 340.1	66.7	320.9	407.5	6.0	6 747.6	71.0
2016									
September	5 189.6	1 210.6	6 400.2	66.4	294.0	379.7	5.6	6 779.9	70.3
October	5 192.8	1 210.0	6 402.8	66.3	296.9	382.2	5.6	6 785.0	70.3
November	5 200.3	1 207.2	6 407.5	66.3	300.2	385.1	5.7	6 792.7	70.2
December	5 211.8	1 205.1	6 417.0	66.3	302.1	387.3	5.7	6 804.3	70.3
2017									
January	5 226.6	1 204.2	6 430.8	66.3	301.9	387.9	5.7	6 818.7	70.3
February	5 243.5	1 204.0	6 447.5	66.4	300.2	387.3	5.7	6 834.8	70.3
March	5 262.0	1 203.1	6 465.1	66.4	297.8	385.9	5.6	6 851.0	70.4
April	5 281.4	1 201.5	6 483.0	66.5	295.6	384.3	5.6	6 867.3	70.5
May	5 301.2	1 199.3	6 500.5	66.6	294.0	383.1	5.6	6 883.6	70.5
June	5 318.7	1 197.8	6 516.4	66.7	293.1	382.6	5.5	6 899.0	70.6
July	5 333.1	1 197.7	6 530.7	66.8	292.5	382.0	5.5	6 912.8	70.7
August	5 344.7	1 198.8	6 543.5	66.8	291.8	381.2	5.5	6 924.7	70.7
September	5 353.2	1 200.2	6 553.4	66.9	291.1	380.9	5.5	6 934.4	70.8
FEMALES									
September 2014	2 843.6	2 456.7	5 300.4	54.8	222.3	357.9	6.3	5 658.3	58.5
September 2015	2 926.2	2 532.2	5 458.4	55.6	222.5	355.4	6.1	5 813.9	59.2
2016									
September	2 942.2	2 603.3	5 545.5	55.6	206.0	339.2	5.8	5 884.7	59.0
October	2 940.7	2 609.7	5 550.4	55.6	208.7	338.6	5.7	5 889.0	59.0
November	2 941.0	2 616.9	5 557.9	55.6	212.4	340.7	5.8	5 898.6	59.0
December	2 942.6	2 624.8	5 567.4	55.6	216.4	345.0	5.8	5 912.4	59.1
2017									
January	2 946.8	2 632.6	5 579.4	55.7	219.5	349.6	5.9	5 928.9	59.2
February	2 953.8	2 639.6	5 593.4	55.7	220.3	352.2	5.9	5 945.6	59.2
March	2 965.3	2 644.4	5 609.7	55.8	218.6	352.3	5.9	5 962.0	59.3
April	2 981.4	2 648.1	5 629.5	55.9	214.6	350.1	5.9	5 979.5	59.4
May	2 999.9	2 652.0	5 651.9	56.1	209.8	346.6	5.8	5 998.5	59.5
June	3 017.2	2 657.6	5 674.8	56.2	205.4	342.9	5.7	6 017.7	59.6
July	3 031.2	2 664.5	5 695.7	56.3	202.0	339.9	5.6	6 035.6	59.7
August	3 042.4	2 671.6	5 714.0	56.5	199.5	337.6	5.6	6 051.6	59.8
September	3 049.9	2 677.9	5 727.8	56.6	197.9	335.6	5.5	6 063.5	59.9

LABOUR FORCE STATUS (AGED 15 YEARS AND OVER), Australia: **Seasonally adjusted**

	EMPLOYED				UNEMPLOYED			LABOUR FORCE	
	Full-time	Part-time	Total	Employment	Looked for	Total	Unemployment	Total	Participation
				to population					
	'000	'000	'000	%	'000	'000	%	'000	%
PERSONS									
September 2014	8 004.6	3 535.4	11 540.0	60.6	544.4	768.7	6.2	12 308.6	64.6
September 2015	8 132.4	3 636.1	11 768.5	60.9	556.3	774.9	6.2	12 543.4	64.9
2016									
September	8 082.2	3 836.5	11 918.7	60.8	501.7	716.6	5.7	12 635.3	64.4
October	8 128.3	3 808.0	11 936.3	60.8	496.0	708.3	5.6	12 644.6	64.4
November	8 172.1	3 811.2	11 983.3	60.9	515.9	731.9	5.8	12 715.2	64.7
December	8 188.9	3 811.1	12 000.0	61.0	527.7	739.1	5.8	12 739.1	64.7
2017									
January	8 133.1	3 873.6	12 006.7	60.9	513.7	725.3	5.7	12 732.0	64.6
February	8 179.5	3 837.8	12 017.3	60.8	523.6	748.3	5.9	12 765.6	64.6
March	8 248.1	3 824.4	12 072.5	61.0	526.0	751.9	5.9	12 824.5	64.8
April	8 245.2	3 876.9	12 122.2	61.2	512.0	731.5	5.7	12 853.6	64.9
May	8 300.7	3 863.5	12 164.3	61.3	489.4	713.2	5.5	12 877.4	64.9
June	8 370.8	3 815.4	12 186.1	61.3	499.2	727.8	5.6	12 913.9	65.0
July	8 352.6	3 864.8	12 217.4	61.4	494.2	727.3	5.6	12 944.7	65.1
August	8 392.1	3 878.3	12 270.4	61.6	497.7	723.3	5.6	12 993.7	65.2
September	8 398.2	3 892.0	12 290.2	61.6	487.1	711.5	5.5	13 001.7	65.2
MALES									
September 2014	5 158.8	1 076.4	6 235.1	66.5	320.1	404.4	6.1	6 639.6	70.8
September 2015	5 207.0	1 123.4	6 330.5	66.6	331.3	419.1	6.2	6 749.6	71.0
2016									
September	5 154.4	1 228.4	6 382.7	66.2	298.5	381.2	5.6	6 764.0	70.1
October	5 190.5	1 207.9	6 398.4	66.2	290.0	374.9	5.5	6 773.2	70.1
November	5 214.3	1 202.3	6 416.6	66.4	303.8	386.4	5.7	6 803.0	70.3
December	5 226.6	1 196.7	6 423.3	66.3	306.6	398.2	5.8	6 821.5	70.5
2017									
January	5 215.0	1 204.4	6 419.4	66.2	298.8	375.2	5.5	6 794.6	70.0
February	5 236.6	1 202.5	6 439.0	66.3	302.3	395.5	5.8	6 834.5	70.3
March	5 263.2	1 201.6	6 464.8	66.4	302.7	392.7	5.7	6 857.5	70.4
April	5 276.2	1 225.4	6 501.6	66.7	290.9	374.8	5.5	6 876.3	70.6
May	5 300.5	1 202.2	6 502.7	66.6	284.6	378.0	5.5	6 880.6	70.5
June	5 346.8	1 156.2	6 503.0	66.6	297.9	385.3	5.6	6 888.4	70.5
July	5 322.4	1 209.2	6 531.6	66.8	298.0	388.3	5.6	6 919.9	70.7
August	5 333.8	1 214.2	6 548.0	66.9	292.0	381.3	5.5	6 929.3	70.8
September	5 360.5	1 199.5	6 559.9	66.9	287.1	376.9	5.4	6 936.9	70.7
FEMALES									
September 2014	2 845.9	2 459.0	5 304.9	54.9	224.3	364.2	6.4	5 669.1	58.6
September 2015	2 925.3	2 512.7	5 438.0	55.4	225.0	355.8	6.1	5 793.8	59.0
2016									
September	2 927.9	2 608.1	5 536.0	55.5	203.2	335.3	5.7	5 871.3	58.9
October	2 937.8	2 600.1	5 537.9	55.5	206.0	333.4	5.7	5 871.4	58.8
November	2 957.9	2 608.9	5 566.8	55.7	212.1	345.5	5.8	5 912.2	59.2
December	2 962.3	2 614.4	5 576.7	55.7	221.1	340.9	5.8	5 917.6	59.2
2017									
January	2 918.1	2 669.2	5 587.3	55.7	215.0	350.1	5.9	5 937.4	59.2
February	2 942.9	2 635.3	5 578.2	55.6	221.2	352.8	5.9	5 931.0	59.1
March	2 984.9	2 622.8	5 607.7	55.8	223.3	359.2	6.0	5 967.0	59.3
April	2 969.0	2 651.6	5 620.6	55.8	221.1	356.7	6.0	5 977.3	59.4
May	3 000.3	2 661.3	5 661.6	56.2	204.7	335.2	5.6	5 996.8	59.5
June	3 023.9	2 659.2	5 683.1	56.3	201.2	342.5	5.7	6 025.6	59.7
July	3 030.2	2 655.5	5 685.8	56.3	196.2	339.0	5.6	6 024.7	59.6
August	3 058.3	2 664.2	5 722.5	56.5	205.7	342.0	5.6	6 064.4	59.9
September	3 037.7	2 692.6	5 730.3	56.5	199.9	334.5	5.5	6 064.8	59.8

LABOUR FORCE STATUS (AGED 15 YEARS AND OVER), Australia: **Original**

	EMPLOYED				UNEMPLOYED			LABOUR FORCE			
	Full-time	Part-time	Total	Employment to	Looked for full-time work	Total	Unemployment rate	Total	Participation rate	Not in the labour force	Civilian population aged 15 and over
				population ratio							
'000	'000	'000	%	'000	'000	%	'000	%	'000	'000	
PERSONS											
September 2014	7 973.9	3 551.9	11 525.8	60.5	524.8	745.8	6.1	12 271.6	64.4	6 771.9	19 043.6
September 2015	8 099.3	3 656.6	11 755.9	60.8	537.1	753.4	6.0	12 509.2	64.7	6 811.1	19 320.4
2016											
September	8 048.9	3 861.5	11 910.4	60.7	484.6	696.5	5.5	12 606.9	64.3	7 009.0	19 615.9
October	8 097.9	3 854.2	11 952.1	60.9	475.3	676.4	5.4	12 628.6	64.3	7 010.7	19 639.3
November	8 197.2	3 819.9	12 017.1	61.1	488.3	684.0	5.4	12 701.1	64.6	6 961.5	19 662.6
December	8 310.7	3 796.2	12 106.9	61.5	516.6	722.7	5.6	12 829.6	65.2	6 856.4	19 686.0
2017											
January	8 075.4	3 768.6	11 844.0	60.1	562.3	776.3	6.2	12 620.3	64.0	7 101.8	19 722.0
February	8 259.7	3 800.9	12 060.6	61.0	566.7	818.9	6.4	12 879.5	65.2	6 878.6	19 758.1
March	8 225.2	3 854.7	12 079.9	61.0	545.1	802.0	6.2	12 881.9	65.1	6 912.2	19 794.2
April	8 219.9	3 927.8	12 147.7	61.3	509.0	729.7	5.7	12 877.4	65.0	6 939.8	19 817.2
May	8 304.0	3 910.8	12 214.8	61.6	483.5	704.0	5.4	12 918.8	65.1	6 921.5	19 840.3
June	8 351.7	3 859.0	12 210.6	61.5	490.0	705.6	5.5	12 916.2	65.0	6 947.1	19 863.3
July	8 374.6	3 838.9	12 213.5	61.4	485.5	712.0	5.5	12 925.5	65.0	6 963.1	19 888.7
August	8 327.2	3 867.9	12 195.2	61.2	490.8	714.2	5.5	12 909.4	64.8	7 004.6	19 914.0
September	8 362.4	3 919.8	12 282.2	61.6	470.4	691.7	5.3	12 973.9	65.1	6 965.4	19 939.4
MALES											
September 2014	5 133.6	1 084.3	6 217.9	66.3	311.8	400.4	6.0	6 618.3	70.6	2 759.3	9 377.6
September 2015	5 180.5	1 131.7	6 312.2	66.4	323.4	415.6	6.2	6 727.8	70.8	2 778.2	9 506.0
2016											
September	5 128.6	1 237.2	6 365.8	66.0	291.4	377.6	5.6	6 743.4	69.9	2 904.1	9 647.5
October	5 177.4	1 223.1	6 400.5	66.3	283.3	364.3	5.4	6 764.8	70.0	2 894.1	9 658.9
November	5 230.4	1 190.4	6 420.8	66.4	290.9	365.7	5.4	6 786.5	70.2	2 883.8	9 670.3
December	5 301.1	1 177.3	6 478.4	66.9	295.7	392.4	5.7	6 870.8	71.0	2 811.0	9 681.8
2017											
January	5 187.3	1 161.1	6 348.4	65.4	326.4	408.4	6.0	6 756.8	69.7	2 942.8	9 699.7
February	5 292.8	1 179.1	6 471.9	66.6	318.2	423.8	6.1	6 895.7	71.0	2 821.8	9 717.6
March	5 258.0	1 211.6	6 469.7	66.5	308.8	409.9	6.0	6 879.5	70.7	2 856.0	9 735.5
April	5 268.6	1 259.3	6 527.9	67.0	284.9	364.6	5.3	6 892.5	70.7	2 854.2	9 746.7
May	5 299.6	1 231.0	6 530.6	66.9	277.8	368.2	5.3	6 898.7	70.7	2 859.1	9 757.9
June	5 326.9	1 187.4	6 514.3	66.7	293.6	371.5	5.4	6 885.8	70.5	2 883.3	9 769.0
July	5 327.1	1 202.6	6 529.6	66.8	297.7	385.0	5.6	6 914.6	70.7	2 866.6	9 781.2
August	5 292.9	1 209.4	6 502.3	66.4	293.9	381.9	5.5	6 884.2	70.3	2 909.2	9 793.4
September	5 333.5	1 208.0	6 541.5	66.7	280.7	373.9	5.4	6 915.4	70.5	2 890.2	9 805.6
FEMALES											
September 2014	2 840.2	2 467.6	5 307.9	54.9	213.0	345.4	6.1	5 653.3	58.5	4 012.7	9 666.0
September 2015	2 918.7	2 524.9	5 443.6	55.5	213.7	337.8	5.8	5 781.4	58.9	4 032.9	9 814.4
2016											
September	2 920.2	2 624.3	5 544.6	55.6	193.1	318.9	5.4	5 863.4	58.8	4 105.0	9 968.4
October	2 920.5	2 631.1	5 551.6	55.6	192.0	312.1	5.3	5 863.7	58.8	4 116.6	9 980.3
November	2 966.8	2 629.5	5 596.3	56.0	197.4	318.3	5.4	5 914.6	59.2	4 077.7	9 992.3
December	3 009.6	2 618.9	5 628.5	56.3	220.9	330.3	5.5	5 958.8	59.6	4 045.4	10 004.2
2017											
January	2 888.1	2 607.5	5 495.5	54.8	235.9	367.9	6.3	5 863.4	58.5	4 158.9	10 022.4
February	2 966.8	2 621.9	5 588.7	55.7	248.4	395.1	6.6	5 983.8	59.6	4 056.8	10 040.5
March	2 967.1	2 643.1	5 610.3	55.8	236.3	392.2	6.5	6 002.4	59.7	4 056.3	10 058.7
April	2 951.3	2 668.5	5 619.8	55.8	224.2	365.1	6.1	5 984.9	59.4	4 085.7	10 070.5
May	3 004.4	2 679.8	5 684.2	56.4	205.7	335.9	5.6	6 020.0	59.7	4 062.4	10 082.4
June	3 024.7	2 671.6	5 696.3	56.4	196.3	334.1	5.5	6 030.4	59.7	4 063.8	10 094.3
July	3 047.5	2 636.3	5 683.9	56.2	187.9	327.0	5.4	6 010.9	59.5	4 096.5	10 107.4
August	3 034.3	2 658.5	5 692.9	56.3	196.9	332.3	5.5	6 025.2	59.5	4 095.4	10 120.6
September	3 028.9	2 711.8	5 740.7	56.6	189.6	317.8	5.2	6 058.5	59.8	4 075.3	10 133.8

	EMPLOYED		<i>Employment to population ratio</i>	UNEMPLOYED		LABOUR FORCE	
	<i>Full-time</i>	<i>Total</i>		<i>Total</i>	<i>Unemployment rate</i>	<i>Labour force</i>	<i>Participation rate</i>
	'000	'000		%	'000	%	'000

TREND

New South Wales	2 726.8	3 887.4	60.7	196.4	4.8	4 083.8	63.8
Victoria	2 133.6	3 168.7	62.3	203.1	6.0	3 371.8	66.2
Queensland	1 653.6	2 436.8	61.7	152.7	5.9	2 589.6	65.5
South Australia	533.3	828.1	58.5	50.9	5.8	879.0	62.1
Western Australia	940.6	1 369.1	64.3	81.1	5.6	1 450.2	68.1
Tasmania	153.7	246.7	57.6	15.6	5.9	262.3	61.2
Northern Territory	103.8	131.4	70.2	5.6	4.1	137.1	73.2
Australian Capital Territory	160.6	219.5	68.2	10.2	4.4	229.7	71.3
Australia	8 403.1	12 281.2	61.6	716.6	5.5	12 997.8	65.2

SEASONALLY ADJUSTED

New South Wales	2 723.7	3 895.9	60.8	189.7	4.6	4 085.7	63.8
Victoria	2 126.5	3 174.8	62.3	202.4	6.0	3 377.1	66.3
Queensland	1 658.4	2 435.7	61.6	151.8	5.9	2 587.5	65.4
South Australia	528.8	826.3	58.4	51.3	5.8	877.6	62.0
Western Australia	939.9	1 370.5	64.3	82.8	5.7	1 453.3	68.2
Tasmania	152.0	246.8	57.6	15.0	5.7	261.8	61.1
Australia	8 398.2	12 290.2	61.6	711.5	5.5	13 001.7	65.2

ORIGINAL

New South Wales	2 717.8	3 899.4	60.9	185.2	4.5	4 084.5	63.8
Victoria	2 108.0	3 160.1	62.0	198.2	5.9	3 358.3	65.9
Queensland	1 659.8	2 434.8	61.6	147.7	5.7	2 582.5	65.3
South Australia	526.7	825.1	58.3	48.6	5.6	873.7	61.7
Western Australia	933.9	1 364.6	64.0	82.0	5.7	1 446.6	67.9
Tasmania	150.6	245.8	57.4	14.7	5.6	260.5	60.8
Northern Territory	104.8	132.7	70.9	6.4	4.6	139.1	74.3
Australian Capital Territory	160.9	219.7	68.2	8.9	3.9	228.6	70.9
Australia	8 362.4	12 282.2	61.6	691.7	5.3	12 973.9	65.1

	EMPLOYED FULL-TIME		EMPLOYED TOTAL		UNEMPLOYED TOTAL		UNEMPLOYMENT RATE		PARTICIPATION RATE		CIVILIAN POPULATION AGED 15 YEARS AND OVER
	Trend	Seasonally adjusted	Trend	Seasonally adjusted	Trend	Seasonally adjusted	Trend	Seasonally adjusted	Trend	Seasonally adjusted	Original
	'000	'000	'000	'000	'000	'000	%	%	%	%	'000
PERSONS											
September 2014	2 529.9	2 529.0	3 616.9	3 610.1	226.7	228.4	5.9	5.9	62.9	62.9	6 106.9
September 2015	2 646.4	2 620.5	3 751.3	3 738.1	225.9	231.0	5.7	5.8	64.2	64.0	6 199.6
2016											
September	2 611.2	2 599.9	3 808.3	3 808.6	199.5	196.4	5.0	4.9	63.6	63.6	6 298.9
October	2 613.0	2 633.4	3 804.1	3 803.5	199.4	196.3	5.0	4.9	63.5	63.4	6 306.9
November	2 615.9	2 614.7	3 800.0	3 807.1	200.9	198.5	5.0	5.0	63.3	63.4	6 314.9
December	2 618.1	2 620.6	3 797.5	3 804.9	202.8	208.2	5.1	5.2	63.2	63.5	6 323.0
2017											
January	2 620.6	2 614.5	3 798.2	3 788.4	203.5	202.1	5.1	5.1	63.2	63.0	6 335.1
February	2 625.1	2 629.0	3 803.7	3 791.4	202.4	209.7	5.1	5.2	63.1	63.0	6 347.1
March	2 634.1	2 634.7	3 813.9	3 814.3	200.3	203.1	5.0	5.1	63.2	63.2	6 359.2
April	2 648.3	2 626.0	3 828.0	3 825.6	198.0	188.5	4.9	4.7	63.2	63.1	6 366.3
May	2 665.9	2 675.8	3 843.3	3 857.2	196.6	193.0	4.9	4.8	63.4	63.5	6 373.3
June	2 683.9	2 692.3	3 857.5	3 861.8	196.2	196.0	4.8	4.8	63.5	63.6	6 380.4
July	2 700.6	2 697.2	3 869.5	3 862.5	196.3	202.6	4.8	5.0	63.6	63.6	6 389.3
August	2 715.0	2 723.8	3 879.7	3 874.9	196.2	200.7	4.8	4.9	63.7	63.7	6 398.2
September	2 726.8	2 723.7	3 887.4	3 895.9	196.4	189.7	4.8	4.6	63.8	63.8	6 407.1
MALES											
September 2014	1 633.0	1 628.8	1 962.7	1 964.2	118.5	116.8	5.7	5.6	69.5	69.4	2 996.5
September 2015	1 664.1	1 639.7	2 011.5	2 003.9	113.6	117.1	5.3	5.5	69.9	69.8	3 040.9
2016											
September	1 642.0	1 630.5	2 038.7	2 038.4	101.3	101.1	4.7	4.7	69.3	69.2	3 090.3
October	1 643.0	1 650.0	2 037.1	2 039.4	101.6	98.6	4.8	4.6	69.1	69.1	3 094.3
November	1 646.4	1 648.1	2 035.5	2 038.7	103.2	100.3	4.8	4.7	69.0	69.0	3 098.3
December	1 651.3	1 649.5	2 035.5	2 035.7	105.1	108.8	4.9	5.1	69.0	69.1	3 102.4
2017											
January	1 656.9	1 655.2	2 037.0	2 028.2	106.2	103.7	5.0	4.9	68.9	68.6	3 108.5
February	1 663.2	1 665.4	2 040.8	2 037.4	106.5	115.0	5.0	5.3	69.0	69.1	3 114.6
March	1 669.9	1 671.3	2 046.0	2 047.7	106.2	108.3	4.9	5.0	69.0	69.1	3 120.7
April	1 676.9	1 672.5	2 052.0	2 059.5	106.1	97.0	4.9	4.5	69.1	69.0	3 124.3
May	1 684.2	1 684.2	2 057.7	2 062.4	106.4	102.9	4.9	4.8	69.2	69.2	3 127.8
June	1 691.1	1 696.8	2 062.7	2 052.6	107.4	107.5	4.9	5.0	69.3	69.0	3 131.4
July	1 697.7	1 698.0	2 067.1	2 070.0	108.4	116.6	5.0	5.3	69.4	69.7	3 135.8
August	1 703.7	1 696.4	2 071.3	2 067.8	109.1	111.8	5.0	5.1	69.4	69.4	3 140.2
September	1 708.8	1 716.3	2 074.7	2 081.8	109.8	102.9	5.0	4.7	69.5	69.5	3 144.6
FEMALES											
September 2014	896.9	900.1	1 654.1	1 645.8	108.2	111.6	6.1	6.3	56.7	56.5	3 110.4
September 2015	982.3	980.8	1 739.8	1 734.2	112.4	113.9	6.1	6.2	58.6	58.5	3 158.7
2016											
September	969.2	969.4	1 769.6	1 770.2	98.2	95.3	5.3	5.1	58.2	58.1	3 208.6
October	970.0	983.4	1 766.9	1 764.1	97.8	97.6	5.2	5.2	58.0	58.0	3 212.6
November	969.4	966.5	1 764.4	1 768.5	97.7	98.2	5.2	5.3	57.9	58.0	3 216.6
December	966.8	971.1	1 762.0	1 769.2	97.7	99.4	5.3	5.3	57.7	58.0	3 220.6
2017											
January	963.7	959.3	1 761.1	1 760.2	97.3	98.4	5.2	5.3	57.6	57.6	3 226.6
February	961.9	963.6	1 762.9	1 754.0	96.0	94.7	5.2	5.1	57.5	57.2	3 232.6
March	964.2	963.4	1 767.9	1 766.6	94.0	94.8	5.1	5.1	57.5	57.5	3 238.5
April	971.3	953.5	1 776.0	1 766.1	92.0	91.5	4.9	4.9	57.6	57.3	3 242.0
May	981.7	991.6	1 785.6	1 794.8	90.2	90.1	4.8	4.8	57.8	58.1	3 245.5
June	992.7	995.5	1 794.8	1 809.1	88.9	88.5	4.7	4.7	58.0	58.4	3 249.0
July	1 002.9	999.2	1 802.4	1 792.5	87.9	85.9	4.6	4.6	58.1	57.7	3 253.5
August	1 011.3	1 027.3	1 808.5	1 807.1	87.1	88.9	4.6	4.7	58.2	58.2	3 258.0
September	1 018.0	1 007.4	1 812.7	1 814.2	86.6	86.8	4.6	4.6	58.3	58.3	3 262.4

	EMPLOYED FULL-TIME		EMPLOYED TOTAL		UNEMPLOYED TOTAL		UNEMPLOYMENT RATE		PARTICIPATION RATE		CIVILIAN POPULATION AGED 15 YEARS AND OVER
	<i>Trend</i>	<i>Seasonally adjusted</i>	<i>Trend</i>	<i>Seasonally adjusted</i>	<i>Trend</i>	<i>Seasonally adjusted</i>	<i>Trend</i>	<i>Seasonally adjusted</i>	<i>Trend</i>	<i>Seasonally adjusted</i>	<i>Original</i>
	'000	'000	'000	'000	'000	'000	%	%	%	%	'000
PERSONS											
September 2014	1 955.8	1 960.7	2 885.8	2 893.3	211.6	212.2	6.8	6.8	64.8	64.9	4 783.5
September 2015	1 970.9	1 968.1	2 958.5	2 949.9	190.9	197.4	6.1	6.3	64.6	64.6	4 873.9
2016											
September	2 061.6	2 047.1	3 072.1	3 060.4	188.4	187.6	5.8	5.8	65.5	65.2	4 977.9
October	2 062.8	2 052.2	3 079.3	3 084.3	190.6	188.0	5.8	5.7	65.6	65.6	4 986.8
November	2 065.4	2 069.8	3 085.4	3 085.5	193.2	199.3	5.9	6.1	65.6	65.8	4 995.7
December	2 069.8	2 084.6	3 092.2	3 100.8	195.9	200.0	6.0	6.1	65.7	66.0	5 004.5
2017											
January	2 075.8	2 069.3	3 100.6	3 088.0	198.1	189.7	6.0	5.8	65.7	65.3	5 017.6
February	2 082.7	2 080.1	3 110.3	3 108.5	199.6	199.4	6.0	6.0	65.8	65.8	5 030.7
March	2 090.7	2 092.8	3 120.4	3 119.4	200.5	204.2	6.0	6.1	65.9	65.9	5 043.8
April	2 099.8	2 086.8	3 130.5	3 137.2	201.3	204.0	6.0	6.1	66.0	66.1	5 051.7
May	2 109.6	2 112.8	3 140.2	3 144.7	202.0	200.4	6.0	6.0	66.1	66.1	5 059.5
June	2 118.7	2 133.9	3 148.9	3 148.9	202.4	198.7	6.0	5.9	66.1	66.1	5 067.4
July	2 125.6	2 122.8	3 156.4	3 147.1	202.7	203.9	6.0	6.1	66.2	66.0	5 076.2
August	2 130.5	2 131.8	3 163.1	3 165.9	202.9	205.5	6.0	6.1	66.2	66.3	5 084.9
September	2 133.6	2 126.5	3 168.7	3 174.8	203.1	202.4	6.0	6.0	66.2	66.3	5 093.7
MALES											
September 2014	1 255.7	1 260.1	1 556.9	1 562.9	113.0	113.0	6.8	6.7	71.3	71.6	2 342.2
September 2015	1 289.5	1 284.2	1 599.1	1 593.4	97.5	106.3	5.7	6.3	71.1	71.3	2 385.4
2016											
September	1 336.0	1 324.8	1 658.0	1 650.8	99.7	97.6	5.7	5.6	72.2	71.8	2 436.5
October	1 337.7	1 339.7	1 658.9	1 665.0	101.4	102.4	5.8	5.8	72.1	72.4	2 440.9
November	1 339.4	1 342.5	1 659.6	1 661.1	102.3	101.2	5.8	5.7	72.0	72.1	2 445.4
December	1 341.2	1 343.8	1 660.9	1 664.4	102.4	108.8	5.8	6.1	71.9	72.4	2 449.9
2017											
January	1 343.5	1 341.5	1 663.5	1 652.4	102.1	97.4	5.8	5.6	71.9	71.2	2 456.4
February	1 346.6	1 348.2	1 667.6	1 669.6	101.6	100.2	5.7	5.7	71.8	71.9	2 463.0
March	1 351.2	1 348.5	1 673.0	1 671.4	101.2	102.4	5.7	5.8	71.9	71.8	2 469.6
April	1 356.7	1 346.4	1 679.1	1 682.3	101.0	100.5	5.7	5.6	72.0	72.1	2 473.3
May	1 362.4	1 365.6	1 684.8	1 685.8	101.2	101.8	5.7	5.7	72.1	72.2	2 477.1
June	1 367.0	1 382.2	1 689.1	1 691.7	101.6	101.9	5.7	5.7	72.2	72.3	2 480.9
July	1 370.0	1 367.0	1 692.2	1 691.2	101.9	101.0	5.7	5.6	72.2	72.1	2 485.1
August	1 371.6	1 370.3	1 694.2	1 695.6	102.1	101.2	5.7	5.6	72.2	72.2	2 489.4
September	1 372.3	1 365.6	1 695.7	1 692.8	102.4	104.0	5.7	5.8	72.2	72.1	2 493.6
FEMALES											
September 2014	700.1	700.6	1 328.9	1 330.4	98.6	99.1	6.9	6.9	58.5	58.6	2 441.3
September 2015	681.4	683.9	1 359.4	1 356.4	93.4	91.1	6.4	6.3	58.4	58.2	2 488.4
2016											
September	725.6	722.3	1 414.2	1 409.6	88.8	90.0	5.9	6.0	59.1	59.0	2 541.4
October	725.1	712.5	1 420.4	1 419.4	89.2	85.6	5.9	5.7	59.3	59.1	2 545.8
November	726.0	727.3	1 425.8	1 424.4	90.9	98.2	6.0	6.4	59.5	59.7	2 550.3
December	728.7	740.8	1 431.3	1 436.3	93.4	91.2	6.1	6.0	59.7	59.8	2 554.7
2017											
January	732.3	727.8	1 437.1	1 435.6	96.0	92.3	6.3	6.0	59.9	59.7	2 561.2
February	736.0	731.9	1 442.7	1 438.9	98.0	99.2	6.4	6.4	60.0	59.9	2 567.7
March	739.6	744.3	1 447.4	1 448.1	99.4	101.7	6.4	6.6	60.1	60.2	2 574.2
April	743.1	740.3	1 451.4	1 454.9	100.3	103.5	6.5	6.6	60.2	60.4	2 578.3
May	747.2	747.2	1 455.4	1 458.9	100.8	98.6	6.5	6.3	60.3	60.3	2 582.4
June	751.6	751.7	1 459.7	1 457.3	100.9	96.8	6.5	6.2	60.3	60.1	2 586.6
July	755.6	755.8	1 464.3	1 455.9	100.9	102.8	6.4	6.6	60.4	60.2	2 591.1
August	758.9	761.5	1 468.9	1 470.3	100.8	104.3	6.4	6.6	60.5	60.7	2 595.6
September	761.3	760.9	1 472.9	1 481.9	100.8	98.4	6.4	6.2	60.6	60.8	2 600.1

	EMPLOYED FULL-TIME		EMPLOYED TOTAL		UNEMPLOYED TOTAL		UNEMPLOYMENT RATE		PARTICIPATION RATE		CIVILIAN POPULATION AGED 15 YEARS AND OVER
	Trend		Trend		Trend		Trend		Trend		Original
	Seasonally adjusted		Seasonally adjusted		Seasonally adjusted		Seasonally adjusted		Seasonally adjusted		
	'000	'000	'000	'000	'000	'000	%	%	%	%	
PERSONS											
September 2014	1 616.4	1 609.6	2 315.9	2 318.7	166.5	158.3	6.7	6.4	65.7	65.5	3 781.4
September 2015	1 639.3	1 641.7	2 354.1	2 354.7	156.7	157.6	6.2	6.3	65.5	65.6	3 831.2
2016											
September	1 622.5	1 601.3	2 341.0	2 337.2	152.0	156.0	6.1	6.3	64.1	64.1	3 888.6
October	1 619.3	1 608.8	2 340.6	2 321.0	151.9	146.0	6.1	5.9	64.0	63.4	3 893.4
November	1 617.0	1 638.1	2 342.2	2 359.9	153.4	151.7	6.1	6.0	64.0	64.4	3 898.3
December	1 616.9	1 631.4	2 346.8	2 348.4	155.6	155.6	6.2	6.2	64.1	64.2	3 903.1
2017											
January	1 619.5	1 597.5	2 353.6	2 355.6	157.9	158.2	6.3	6.3	64.2	64.3	3 909.9
February	1 623.8	1 608.9	2 361.8	2 345.6	160.0	166.7	6.3	6.6	64.4	64.1	3 916.7
March	1 628.9	1 639.9	2 371.1	2 378.1	161.4	158.8	6.4	6.3	64.6	64.7	3 923.5
April	1 634.4	1 648.1	2 381.9	2 387.9	161.3	160.4	6.3	6.3	64.7	64.9	3 929.0
May	1 640.6	1 636.4	2 394.4	2 394.7	160.0	155.7	6.3	6.1	64.9	64.8	3 934.5
June	1 645.5	1 645.2	2 407.1	2 394.8	158.3	165.1	6.2	6.4	65.1	65.0	3 940.0
July	1 648.9	1 641.3	2 418.8	2 423.1	156.4	159.3	6.1	6.2	65.3	65.5	3 944.7
August	1 651.9	1 655.4	2 429.4	2 440.1	154.3	147.8	6.0	5.7	65.4	65.5	3 949.4
September	1 653.6	1 658.4	2 436.8	2 435.7	152.7	151.8	5.9	5.9	65.5	65.4	3 954.1
MALES											
September 2014	1 025.8	1 022.3	1 232.0	1 229.8	87.7	80.4	6.6	6.1	70.9	70.4	1 861.8
September 2015	1 035.4	1 042.9	1 246.4	1 248.9	89.7	89.4	6.7	6.7	71.0	71.1	1 883.3
2016											
September	1 021.7	1 009.9	1 241.6	1 241.3	80.4	80.5	6.1	6.1	69.2	69.2	1 909.2
October	1 020.5	1 012.4	1 240.0	1 226.7	81.1	79.1	6.1	6.1	69.1	68.3	1 911.5
November	1 019.2	1 027.5	1 238.8	1 246.3	82.4	83.2	6.2	6.3	69.0	69.5	1 913.7
December	1 018.7	1 032.4	1 239.4	1 243.3	84.0	85.9	6.3	6.5	69.0	69.4	1 916.0
2017											
January	1 019.4	1 012.5	1 241.9	1 243.9	85.2	83.5	6.4	6.3	69.1	69.2	1 919.3
February	1 020.9	1 011.9	1 245.9	1 236.6	86.3	89.2	6.5	6.7	69.3	69.0	1 922.6
March	1 023.4	1 018.7	1 251.0	1 248.3	86.9	85.0	6.5	6.4	69.5	69.2	1 926.0
April	1 027.0	1 035.2	1 257.2	1 263.0	86.8	85.6	6.5	6.3	69.7	69.9	1 928.6
May	1 031.9	1 034.9	1 264.1	1 268.3	86.1	86.4	6.4	6.4	69.9	70.1	1 931.2
June	1 036.6	1 037.0	1 270.9	1 266.1	84.9	88.7	6.3	6.5	70.1	70.1	1 933.8
July	1 040.2	1 034.1	1 276.6	1 275.2	83.5	85.6	6.1	6.3	70.3	70.3	1 935.9
August	1 043.2	1 046.8	1 281.5	1 288.2	82.0	74.9	6.0	5.5	70.4	70.3	1 938.0
September	1 045.2	1 045.7	1 284.8	1 282.2	80.9	82.3	5.9	6.0	70.4	70.3	1 940.1
FEMALES											
September 2014	590.6	587.3	1 083.9	1 088.9	78.8	77.8	6.8	6.7	60.6	60.8	1 919.7
September 2015	603.9	598.8	1 107.6	1 105.8	67.0	68.2	5.7	5.8	60.3	60.3	1 947.9
2016											
September	600.8	591.4	1 099.4	1 095.9	71.6	75.5	6.1	6.4	59.2	59.2	1 979.4
October	598.8	596.4	1 100.6	1 094.2	70.9	66.9	6.0	5.8	59.1	58.6	1 982.0
November	597.8	610.6	1 103.4	1 113.6	71.0	68.5	6.0	5.8	59.2	59.6	1 984.5
December	598.3	599.0	1 107.4	1 105.1	71.7	69.7	6.1	5.9	59.3	59.1	1 987.1
2017											
January	600.1	585.0	1 111.7	1 111.7	72.7	74.7	6.1	6.3	59.5	59.6	1 990.6
February	602.8	597.0	1 115.9	1 109.1	73.8	77.5	6.2	6.5	59.7	59.5	1 994.0
March	605.5	621.2	1 120.0	1 129.8	74.5	73.8	6.2	6.1	59.8	60.3	1 997.5
April	607.4	612.9	1 124.7	1 124.9	74.5	74.8	6.2	6.2	59.9	60.0	2 000.4
May	608.7	601.5	1 130.2	1 126.4	73.9	69.4	6.1	5.8	60.1	59.7	2 003.3
June	608.9	608.2	1 136.2	1 128.8	73.3	76.4	6.1	6.3	60.3	60.1	2 006.3
July	608.7	607.2	1 142.2	1 147.9	72.8	73.7	6.0	6.0	60.5	60.8	2 008.9
August	608.8	608.5	1 147.9	1 151.8	72.3	72.9	5.9	6.0	60.7	60.9	2 011.4
September	608.4	612.7	1 152.1	1 153.5	71.9	69.6	5.9	5.7	60.8	60.7	2 014.0

	EMPLOYED FULL-TIME		EMPLOYED TOTAL		UNEMPLOYED TOTAL		UNEMPLOYMENT RATE		PARTICIPATION RATE		CIVILIAN POPULATION AGED 15 YEARS AND OVER
	<i>Trend</i>	<i>Seasonally adjusted</i>	<i>Trend</i>	<i>Seasonally adjusted</i>	<i>Trend</i>	<i>Seasonally adjusted</i>	<i>Trend</i>	<i>Seasonally adjusted</i>	<i>Trend</i>	<i>Seasonally adjusted</i>	<i>Original</i>
	'000	'000	'000	'000	'000	'000	%	%	%	%	'000
PERSONS											
September 2014	538.2	538.0	803.1	805.1	56.9	58.6	6.6	6.8	62.0	62.3	1 387.0
September 2015	522.8	525.6	803.3	799.1	67.2	66.1	7.7	7.6	62.3	61.9	1 398.5
2016											
September	524.4	522.8	813.0	812.3	58.7	59.2	6.7	6.8	62.0	61.9	1 406.9
October	526.0	523.2	814.4	814.8	58.1	56.2	6.7	6.4	62.0	61.9	1 407.3
November	527.3	530.3	816.0	815.4	57.7	60.7	6.6	6.9	62.1	62.2	1 407.7
December	528.0	528.5	817.2	815.0	57.8	57.2	6.6	6.6	62.1	61.9	1 408.1
2017											
January	528.2	532.4	818.0	821.5	58.4	55.6	6.7	6.3	62.2	62.2	1 409.3
February	528.5	523.7	818.4	821.0	59.4	57.7	6.8	6.6	62.2	62.3	1 410.5
March	529.1	528.1	818.8	818.9	60.3	61.6	6.9	7.0	62.3	62.4	1 411.7
April	530.1	530.5	819.5	813.9	60.4	63.9	6.9	7.3	62.3	62.2	1 412.3
May	531.6	528.6	820.9	819.9	59.4	60.1	6.7	6.8	62.3	62.3	1 412.9
June	532.8	537.3	822.7	824.6	57.5	57.8	6.5	6.5	62.3	62.4	1 413.5
July	533.5	535.2	824.7	826.4	55.2	54.5	6.3	6.2	62.2	62.3	1 414.1
August	533.8	534.4	826.5	828.1	53.0	50.1	6.0	5.7	62.2	62.1	1 414.8
September	533.3	528.8	828.1	826.3	50.9	51.3	5.8	5.8	62.1	62.0	1 415.4
MALES											
September 2014	355.5	356.8	432.9	433.2	31.0	31.6	6.7	6.8	68.2	68.3	680.3
September 2015	339.3	342.0	423.6	423.6	38.7	38.9	8.4	8.4	67.4	67.5	685.7
2016											
September	337.1	335.8	427.6	425.6	32.3	33.0	7.0	7.2	66.7	66.5	689.7
October	337.8	336.2	427.6	428.5	32.5	29.9	7.1	6.5	66.7	66.4	689.9
November	338.5	340.9	427.7	427.3	32.7	34.4	7.1	7.4	66.7	66.9	690.1
December	339.3	340.8	428.3	427.3	32.9	35.1	7.1	7.6	66.8	67.0	690.3
2017											
January	340.5	339.5	429.5	429.6	32.9	31.2	7.1	6.8	66.9	66.7	690.9
February	342.1	339.1	431.0	431.3	32.5	31.5	7.0	6.8	67.0	66.9	691.5
March	344.0	344.5	432.5	432.6	31.8	33.5	6.9	7.2	67.1	67.4	692.1
April	346.1	347.3	434.1	434.6	30.8	29.4	6.6	6.3	67.1	67.0	692.4
May	348.1	348.2	435.7	435.8	29.5	31.8	6.3	6.8	67.2	67.5	692.7
June	349.7	351.7	437.3	436.7	28.2	27.2	6.1	5.9	67.2	66.9	693.0
July	350.9	349.6	439.0	437.7	26.8	26.8	5.7	5.8	67.2	67.0	693.3
August	351.9	351.0	440.6	442.3	25.5	24.2	5.5	5.2	67.2	67.3	693.6
September	352.4	353.0	441.9	442.7	24.3	24.7	5.2	5.3	67.2	67.4	693.9
FEMALES											
September 2014	182.7	181.2	370.2	372.0	25.9	27.0	6.5	6.8	56.1	56.5	706.7
September 2015	183.4	183.5	379.7	375.5	28.4	27.2	7.0	6.8	57.3	56.5	712.8
2016											
September	187.3	187.0	385.3	386.7	26.4	26.2	6.4	6.3	57.4	57.6	717.2
October	188.2	187.0	386.8	386.3	25.7	26.3	6.2	6.4	57.5	57.5	717.4
November	188.8	189.5	388.3	388.0	25.0	26.3	6.1	6.4	57.6	57.7	717.6
December	188.6	187.7	388.9	387.8	24.9	22.2	6.0	5.4	57.6	57.1	717.8
2017											
January	187.7	192.9	388.5	391.9	25.6	24.4	6.2	5.9	57.6	58.0	718.4
February	186.3	184.6	387.5	389.7	26.9	26.2	6.5	6.3	57.6	57.8	719.0
March	185.0	183.6	386.3	386.2	28.5	28.0	6.9	6.8	57.6	57.6	719.6
April	184.1	183.2	385.4	379.3	29.6	34.5	7.1	8.3	57.7	57.5	719.9
May	183.5	180.4	385.2	384.1	29.9	28.3	7.2	6.9	57.6	57.3	720.2
June	183.1	185.6	385.4	388.0	29.3	30.5	7.1	7.3	57.5	58.1	720.5
July	182.6	185.6	385.7	388.6	28.4	27.7	6.9	6.7	57.5	57.8	720.9
August	181.9	183.3	385.9	385.8	27.5	25.9	6.6	6.3	57.3	57.1	721.2
September	180.9	175.8	386.1	383.6	26.6	26.7	6.4	6.5	57.2	56.9	721.5

	EMPLOYED FULL-TIME		EMPLOYED TOTAL		UNEMPLOYED TOTAL		UNEMPLOYMENT RATE		PARTICIPATION RATE		CIVILIAN POPULATION AGED 15 YEARS AND OVER
	<i>Trend</i>	<i>Seasonally adjusted</i>	<i>Trend</i>	<i>Seasonally adjusted</i>	<i>Trend</i>	<i>Seasonally adjusted</i>	<i>Trend</i>	<i>Seasonally adjusted</i>	<i>Trend</i>	<i>Seasonally adjusted</i>	<i>Original</i>
	'000	'000	'000	'000	'000	'000	%	%	%	%	'000
PERSONS											
September 2014	954.0	953.8	1 342.4	1 342.7	71.6	70.8	5.1	5.0	68.3	68.3	2 070.0
September 2015	947.6	950.2	1 350.6	1 344.9	88.9	84.6	6.2	5.9	68.7	68.2	2 094.6
2016											
September	896.4	889.6	1 330.1	1 322.4	90.7	85.1	6.4	6.0	67.2	66.6	2 114.0
October	897.0	895.3	1 330.3	1 331.2	91.7	91.5	6.4	6.4	67.3	67.3	2 114.8
November	899.7	906.6	1 332.1	1 337.5	92.4	97.6	6.5	6.8	67.3	67.8	2 115.5
December	904.3	905.5	1 334.7	1 330.2	92.4	92.7	6.5	6.5	67.4	67.2	2 116.3
2017											
January	910.5	902.9	1 338.1	1 345.2	91.5	90.9	6.4	6.3	67.5	67.8	2 118.4
February	917.3	917.7	1 342.1	1 339.8	89.5	85.5	6.2	6.0	67.5	67.2	2 120.4
March	924.3	926.4	1 346.6	1 339.2	86.6	92.4	6.0	6.5	67.5	67.4	2 122.5
April	930.3	933.3	1 351.5	1 354.0	84.0	84.1	5.9	5.8	67.6	67.7	2 123.8
May	935.0	933.8	1 356.5	1 358.4	82.2	78.4	5.7	5.5	67.7	67.6	2 125.1
June	937.9	941.0	1 360.8	1 365.5	81.2	80.7	5.6	5.6	67.8	68.0	2 126.5
July	939.5	942.4	1 364.3	1 364.3	80.8	77.6	5.6	5.4	67.9	67.8	2 128.0
August	940.4	935.4	1 367.1	1 362.2	80.9	85.0	5.6	5.9	68.0	68.0	2 129.6
September	940.6	939.9	1 369.1	1 370.5	81.1	82.8	5.6	5.7	68.1	68.2	2 131.1
MALES											
September 2014	638.5	636.0	748.8	746.6	40.1	40.1	5.1	5.1	75.8	75.5	1 041.4
September 2015	635.2	639.6	752.9	753.8	49.8	47.2	6.2	5.9	76.3	76.2	1 051.7
2016											
September	597.5	593.7	727.2	721.5	48.8	50.8	6.3	6.6	73.2	72.9	1 059.9
October	597.3	596.4	727.9	728.7	49.4	48.2	6.4	6.2	73.3	73.3	1 060.2
November	598.8	601.3	730.1	731.5	49.4	52.5	6.3	6.7	73.5	73.9	1 060.4
December	601.9	601.6	733.2	734.3	48.7	48.4	6.2	6.2	73.7	73.8	1 060.7
2017											
January	605.8	601.3	736.7	735.2	47.6	46.1	6.1	5.9	73.9	73.6	1 061.7
February	610.0	612.1	740.4	740.6	46.3	44.6	5.9	5.7	74.0	73.9	1 062.6
March	613.6	615.1	743.7	742.9	45.1	48.5	5.7	6.1	74.2	74.4	1 063.5
April	616.1	619.8	746.1	748.9	44.2	43.9	5.6	5.5	74.3	74.5	1 064.1
May	617.6	615.4	747.8	746.2	43.9	41.3	5.5	5.2	74.4	74.0	1 064.7
June	618.3	618.5	748.9	752.3	43.9	44.1	5.5	5.5	74.4	74.8	1 065.3
July	618.7	620.1	749.5	749.7	44.1	43.4	5.6	5.5	74.4	74.4	1 066.0
August	619.1	614.4	750.0	744.2	44.4	46.5	5.6	5.9	74.5	74.1	1 066.7
September	619.5	622.9	750.3	753.6	44.6	44.7	5.6	5.6	74.5	74.8	1 067.3
FEMALES											
September 2014	315.5	317.8	593.6	596.0	31.5	30.8	5.0	4.9	60.8	60.9	1 028.6
September 2015	312.5	310.6	597.7	591.1	39.1	37.4	6.1	6.0	61.1	60.3	1 042.9
2016											
September	298.9	295.8	602.9	600.9	41.9	34.3	6.5	5.4	61.2	60.3	1 054.1
October	299.7	298.9	602.4	602.5	42.4	43.3	6.6	6.7	61.1	61.2	1 054.6
November	300.9	305.3	602.0	606.0	43.0	45.2	6.7	6.9	61.1	61.7	1 055.1
December	302.5	303.8	601.6	595.8	43.7	44.3	6.8	6.9	61.1	60.6	1 055.6
2017											
January	304.7	301.6	601.3	610.0	43.8	44.8	6.8	6.8	61.1	62.0	1 056.7
February	307.3	305.6	601.7	599.2	43.2	40.9	6.7	6.4	61.0	60.5	1 057.8
March	310.7	311.4	603.0	596.2	41.6	43.9	6.5	6.9	60.9	60.5	1 059.0
April	314.2	313.4	605.4	605.1	39.8	40.2	6.2	6.2	60.9	60.9	1 059.7
May	317.4	318.4	608.7	612.2	38.3	37.1	5.9	5.7	61.0	61.2	1 060.4
June	319.6	322.5	611.9	613.2	37.3	36.6	5.8	5.6	61.2	61.2	1 061.2
July	320.8	322.3	614.8	614.6	36.8	34.2	5.6	5.3	61.3	61.1	1 062.0
August	321.3	321.0	617.1	618.0	36.5	38.5	5.6	5.9	61.5	61.8	1 062.9
September	321.1	317.1	618.8	616.9	36.4	38.1	5.6	5.8	61.6	61.6	1 063.7

	EMPLOYED		EMPLOYED TOTAL		UNEMPLOYED		UNEMPLOYMENT		PARTICIPATION		CIVILIAN POPULATION AGED 15 YEARS AND OVER
	FULL-TIME				TOTAL		RATE		RATE		
	<i>Trend</i>	<i>Seasonally adjusted</i>	<i>Trend</i>	<i>Seasonally adjusted</i>	<i>Trend</i>	<i>Seasonally adjusted</i>	<i>Trend</i>	<i>Seasonally adjusted</i>	<i>Trend</i>	<i>Seasonally adjusted</i>	
	'000	'000	'000	'000	'000	'000	%	%	%	%	
PERSONS											
September 2014	151.6	151.1	238.7	237.2	18.1	19.6	7.1	7.6	61.1	61.1	420.3
September 2015	156.2	156.9	241.3	241.7	16.3	15.4	6.3	6.0	60.9	60.8	423.0
2016											
September	152.3	154.2	237.4	239.7	16.7	16.7	6.6	6.5	59.7	60.3	425.4
October	151.6	150.5	238.0	236.3	16.4	16.2	6.5	6.4	59.8	59.3	425.7
November	151.0	149.2	238.5	239.0	16.0	16.1	6.3	6.3	59.8	59.9	425.9
December	150.7	152.1	239.0	238.9	15.6	16.1	6.1	6.3	59.7	59.8	426.2
2017											
January	150.9	150.5	239.6	240.4	15.2	14.3	6.0	5.6	59.7	59.7	426.5
February	151.6	151.5	240.6	239.6	15.0	14.8	5.9	5.8	59.9	59.6	426.9
March	152.5	152.4	241.8	241.3	15.1	15.3	5.9	6.0	60.1	60.1	427.2
April	153.5	152.4	243.0	242.4	15.2	15.2	5.9	5.9	60.4	60.3	427.4
May	154.1	155.5	244.2	245.2	15.4	15.9	5.9	6.1	60.7	61.0	427.6
June	154.4	155.9	245.1	246.9	15.6	14.7	6.0	5.6	60.9	61.2	427.8
July	154.3	153.9	245.9	244.8	15.6	16.5	6.0	6.3	61.1	61.1	428.0
August	154.1	154.1	246.4	245.8	15.6	15.7	6.0	6.0	61.2	61.1	428.2
September	153.7	152.0	246.7	246.8	15.6	15.0	5.9	5.7	61.2	61.1	428.5
MALES											
September 2014	100.5	100.7	126.4	125.2	10.9	11.9	7.9	8.7	66.2	66.1	207.5
September 2015	102.6	102.9	129.0	129.6	8.5	7.7	6.2	5.6	65.9	65.7	208.7
2016											
September	102.0	103.0	126.7	127.8	9.4	9.0	6.9	6.6	64.8	65.2	209.9
October	101.7	101.0	127.2	126.3	9.3	10.3	6.8	7.5	65.0	65.0	210.0
November	101.4	100.4	127.5	128.0	9.0	8.7	6.6	6.3	65.0	65.0	210.2
December	101.3	101.6	127.7	127.8	8.6	9.2	6.3	6.7	64.8	65.1	210.3
2017											
January	101.3	102.1	127.7	128.3	8.2	7.7	6.0	5.6	64.6	64.6	210.5
February	101.6	101.1	127.9	127.4	7.9	7.6	5.8	5.6	64.4	64.1	210.6
March	102.1	101.0	128.1	127.3	7.7	7.5	5.7	5.6	64.5	64.0	210.8
April	102.4	103.0	128.4	128.4	7.9	7.8	5.8	5.7	64.6	64.6	210.9
May	102.4	103.0	128.6	129.0	8.1	8.5	5.9	6.2	64.8	65.2	211.0
June	102.2	102.7	128.8	129.4	8.4	8.1	6.1	5.9	65.0	65.2	211.1
July	101.7	102.3	128.8	128.9	8.6	9.0	6.2	6.5	65.1	65.3	211.2
August	101.1	100.4	128.7	128.7	8.7	8.9	6.3	6.4	65.1	65.1	211.3
September	100.5	99.1	128.6	127.7	8.8	8.4	6.4	6.2	65.0	64.4	211.4
FEMALES											
September 2014	51.1	50.3	112.3	112.0	7.3	7.6	6.1	6.4	56.2	56.2	212.8
September 2015	53.6	54.0	112.3	112.1	7.7	7.8	6.4	6.5	56.0	56.0	214.2
2016											
September	50.3	51.3	110.7	112.0	7.3	7.7	6.2	6.5	54.8	55.5	215.5
October	49.9	49.5	110.8	110.0	7.1	5.9	6.0	5.1	54.7	53.8	215.6
November	49.6	48.8	111.0	111.0	7.0	7.4	5.9	6.2	54.7	54.9	215.8
December	49.5	50.5	111.3	111.2	7.0	6.9	5.9	5.9	54.8	54.7	215.9
2017											
January	49.6	48.4	111.9	112.1	7.0	6.7	5.9	5.6	55.0	55.0	216.1
February	49.9	50.3	112.7	112.2	7.2	7.3	6.0	6.1	55.4	55.2	216.3
March	50.5	51.4	113.7	114.0	7.3	7.7	6.1	6.4	55.9	56.2	216.4
April	51.1	49.3	114.6	114.0	7.4	7.4	6.0	6.1	56.3	56.0	216.5
May	51.7	52.5	115.5	116.2	7.3	7.4	5.9	6.0	56.7	57.0	216.6
June	52.2	53.2	116.3	117.5	7.2	6.7	5.8	5.4	57.0	57.3	216.7
July	52.6	51.5	117.0	115.9	7.1	7.6	5.7	6.1	57.2	56.9	216.8
August	53.0	53.7	117.7	117.2	6.9	6.9	5.6	5.5	57.4	57.2	217.0
September	53.2	52.9	118.2	119.1	6.8	6.6	5.4	5.2	57.6	57.9	217.1

	EMPLOYED FULL-TIME	EMPLOYED TOTAL	UNEMPLOYED TOTAL	UNEMPLOYMENT RATE	PARTICIPATION RATE	CIVILIAN POPULATION AGED 15 YEARS AND OVER
	<i>Trend</i>	<i>Trend</i>	<i>Trend</i>	<i>Trend</i>	<i>Trend</i>	<i>Original</i>
	'000	'000	'000	%	%	'000
PERSONS						
September 2014	105.4	128.4	5.4	4.0	72.4	185.0
September 2015	108.8	133.9	6.1	4.4	75.4	185.8
2016						
September	107.4	134.7	4.9	3.5	74.8	186.8
October	107.9	135.3	5.0	3.6	75.2	186.5
November	108.7	136.5	5.1	3.6	76.0	186.2
December	109.7	138.0	5.2	3.6	76.9	186.0
2017						
January	110.2	139.2	5.2	3.6	77.7	186.0
February	110.0	139.8	5.1	3.5	77.9	186.0
March	109.1	139.6	4.9	3.4	77.6	186.1
April	107.9	138.4	4.7	3.3	76.8	186.3
May	106.5	136.7	4.7	3.3	75.8	186.6
June	105.4	134.9	4.8	3.5	74.8	186.9
July	104.6	133.4	5.1	3.7	74.1	187.0
August	104.1	132.2	5.4	3.9	73.5	187.1
September	103.8	131.4	5.6	4.1	73.2	187.3
MALES						
September 2014	63.9	70.8	3.2	4.4	76.5	96.9
September 2015	65.2	73.8	3.2	4.1	79.2	97.3
2016						
September	64.0	73.8	3.1	4.0	78.9	97.5
October	64.4	74.2	3.0	3.9	79.3	97.3
November	65.0	74.9	3.0	3.8	80.1	97.2
December	65.7	75.8	2.9	3.6	81.0	97.0
2017						
January	66.1	76.6	2.7	3.4	81.8	96.9
February	66.1	77.0	2.6	3.2	82.1	96.9
March	65.6	76.8	2.4	3.1	81.7	96.9
April	64.8	76.1	2.4	3.0	80.8	97.1
May	64.0	75.0	2.4	3.2	79.6	97.2
June	63.2	73.9	2.6	3.4	78.6	97.4
July	62.7	73.0	2.8	3.7	77.8	97.5
August	62.4	72.3	3.1	4.0	77.2	97.6
September	62.3	71.9	3.2	4.3	76.9	97.6
FEMALES						
September 2014	41.5	57.6	2.2	3.6	68.0	88.1
September 2015	43.6	60.1	2.9	4.6	71.2	88.6
2016						
September	43.5	60.9	1.8	2.9	70.4	89.2
October	43.5	61.1	1.9	3.1	70.8	89.1
November	43.7	61.6	2.1	3.3	71.5	89.1
December	44.0	62.2	2.3	3.6	72.4	89.0
2017						
January	44.1	62.6	2.5	3.8	73.1	89.1
February	43.9	62.8	2.5	3.9	73.4	89.1
March	43.5	62.7	2.5	3.8	73.2	89.1
April	43.0	62.3	2.4	3.6	72.5	89.3
May	42.5	61.7	2.3	3.5	71.6	89.4
June	42.1	61.0	2.2	3.5	70.7	89.5
July	41.9	60.4	2.2	3.6	70.0	89.5
August	41.7	59.9	2.3	3.7	69.5	89.6
September	41.5	59.6	2.4	3.9	69.1	89.6

	EMPLOYED FULL-TIME	EMPLOYED TOTAL	UNEMPLOYED TOTAL	UNEMPLOYMENT RATE	PARTICIPATION RATE	CIVILIAN POPULATION AGED 15 YEARS AND OVER
	<i>Trend</i>	<i>Trend</i>	<i>Trend</i>	<i>Trend</i>	<i>Trend</i>	<i>Original</i>
	'000	'000	'000	%	%	'000
PERSONS						
September 2014	155.5	208.4	10.6	4.9	70.8	309.5
September 2015	153.1	209.8	11.1	5.0	70.5	313.8
2016						
September	158.1	215.2	8.0	3.6	70.3	317.5
October	157.9	215.5	8.1	3.6	70.3	317.9
November	157.5	215.6	8.2	3.7	70.3	318.3
December	157.2	215.8	8.2	3.7	70.3	318.7
2017						
January	156.8	216.0	8.1	3.6	70.2	319.2
February	156.4	216.0	8.1	3.6	70.1	319.7
March	156.1	216.0	8.4	3.7	70.1	320.2
April	156.1	215.9	8.9	3.9	70.2	320.4
May	156.7	216.2	9.4	4.2	70.3	320.7
June	157.5	216.8	9.9	4.3	70.6	320.9
July	158.5	217.6	10.1	4.4	70.9	321.4
August	159.6	218.5	10.2	4.4	71.1	321.8
September	160.6	219.5	10.2	4.4	71.3	322.3
MALES						
September 2014	89.6	107.0	4.9	4.3	74.1	151.0
September 2015	86.9	106.1	5.9	5.3	73.3	153.0
2016						
September	90.8	110.1	4.3	3.8	74.0	154.6
October	91.1	110.2	4.4	3.8	74.0	154.8
November	91.4	110.2	4.5	3.9	74.0	155.0
December	91.5	110.2	4.4	3.8	73.8	155.2
2017						
January	91.2	110.2	4.2	3.7	73.6	155.5
February	90.9	110.2	4.1	3.6	73.4	155.7
March	90.6	110.1	4.2	3.7	73.3	155.9
April	90.7	110.0	4.5	3.9	73.4	156.1
May	91.1	110.1	4.8	4.2	73.6	156.2
June	91.8	110.5	5.2	4.5	73.9	156.3
July	92.5	110.9	5.4	4.6	74.3	156.5
August	93.2	111.4	5.5	4.7	74.6	156.8
September	93.8	111.8	5.6	4.8	74.8	157.0
FEMALES						
September 2014	65.9	101.4	5.8	5.4	67.7	158.5
September 2015	66.3	103.7	5.2	4.7	67.7	160.8
2016						
September	67.3	105.1	3.7	3.4	66.8	162.9
October	66.7	105.3	3.7	3.4	66.8	163.1
November	66.1	105.4	3.8	3.4	66.9	163.3
December	65.7	105.6	3.8	3.5	66.9	163.5
2017						
January	65.5	105.7	3.9	3.5	66.9	163.7
February	65.5	105.9	4.0	3.6	67.0	164.0
March	65.4	105.9	4.2	3.8	67.0	164.3
April	65.4	105.9	4.4	4.0	67.1	164.4
May	65.5	106.1	4.6	4.1	67.3	164.5
June	65.7	106.4	4.7	4.2	67.4	164.6
July	66.0	106.7	4.7	4.2	67.6	164.8
August	66.4	107.2	4.6	4.2	67.8	165.1
September	66.7	107.7	4.5	4.0	68.0	165.3

	EMPLOYED				UNEMPLOYED				LABOUR FORCE
	Full-time	Part-time	Total	Employment to population ratio	Looked for full-time work	Looked for part-time work only	Total	Unemployment rate	Participation rate
PERSONS									
September 2014	876.3	917.5	1 793.6	57.5	161.9	125.1	289.3	13.9	66.7
September 2015	876.6	965.6	1 842.5	58.8	156.1	114.7	272.3	12.9	67.4
2016									
September	827.5	1 008.0	1 836.3	58.0	157.6	116.6	275.2	13.0	66.7
October	821.1	1 010.4	1 830.9	57.8	158.4	115.5	274.4	13.0	66.5
November	818.5	1 012.2	1 828.6	57.7	159.0	115.3	274.2	13.0	66.4
December	820.0	1 013.7	1 829.9	57.7	159.5	115.8	274.6	13.0	66.5
2017									
January	824.4	1 014.2	1 834.1	57.7	159.6	116.4	275.0	13.0	66.6
February	830.6	1 012.9	1 839.7	57.8	158.8	117.1	275.1	13.0	66.6
March	837.7	1 009.6	1 845.6	57.9	156.9	118.1	274.8	12.9	66.6
April	843.9	1 006.7	1 851.7	58.1	154.5	119.8	274.7	12.9	66.6
May	848.7	1 006.8	1 858.4	58.2	152.2	121.9	275.1	12.9	66.7
June	852.2	1 011.2	1 866.3	58.4	150.2	123.7	275.4	12.9	66.9
July	854.9	1 018.6	1 875.4	58.7	148.7	124.9	275.5	12.8	67.2
August	856.8	1 027.4	1 884.8	58.9	147.9	125.5	275.4	12.8	67.5
September	857.3	1 036.2	1 892.5	59.2	147.6	125.7	275.6	12.7	67.7
MALES									
September 2014	528.7	385.9	914.6	57.3	99.2	59.6	158.8	14.8	67.3
September 2015	527.3	409.1	936.4	58.3	95.4	56.7	152.1	14.0	67.8
2016									
September	487.6	445.5	933.1	57.6	97.7	55.7	153.4	14.1	67.1
October	483.7	445.5	929.2	57.4	98.8	55.7	154.5	14.3	66.9
November	483.2	444.5	927.8	57.3	99.1	56.3	155.4	14.3	66.8
December	487.0	443.4	930.3	57.4	98.2	57.6	155.8	14.3	67.0
2017									
January	494.0	442.0	936.0	57.6	96.3	59.2	155.4	14.2	67.2
February	502.5	440.2	942.7	57.9	93.8	60.5	154.3	14.1	67.4
March	510.3	438.1	948.3	58.2	91.5	61.3	152.8	13.9	67.6
April	514.8	436.9	951.7	58.4	90.1	61.5	151.7	13.7	67.6
May	516.0	437.4	953.4	58.4	89.6	61.7	151.3	13.7	67.7
June	515.3	439.5	954.8	58.5	89.5	62.1	151.6	13.7	67.8
July	514.0	442.5	956.5	58.6	89.5	62.7	152.2	13.7	67.9
August	512.5	446.1	958.6	58.7	89.5	63.3	152.8	13.8	68.0
September	510.4	449.5	959.9	58.7	89.6	64.1	153.7	13.8	68.1
FEMALES									
September 2014	347.7	531.6	879.3	57.8	62.7	65.5	128.2	12.7	66.2
September 2015	349.3	556.5	905.8	59.2	60.7	58.0	118.7	11.6	67.0
2016									
September	339.9	562.5	902.4	58.4	59.9	60.9	120.8	11.8	66.2
October	337.4	564.9	902.3	58.4	59.6	59.8	119.4	11.7	66.1
November	335.3	567.7	903.0	58.3	59.9	59.0	118.9	11.6	66.0
December	333.0	570.3	903.3	58.3	61.2	58.2	119.4	11.7	66.0
2017									
January	330.4	572.2	902.6	58.2	63.3	57.2	120.5	11.8	65.9
February	328.1	572.7	900.8	58.0	65.0	56.5	121.5	11.9	65.8
March	327.4	571.5	898.9	57.8	65.4	56.8	122.2	12.0	65.6
April	329.1	569.8	898.9	57.7	64.4	58.3	122.6	12.0	65.6
May	332.7	569.4	902.1	57.8	62.6	60.2	122.7	12.0	65.7
June	336.8	571.8	908.6	58.2	60.7	61.6	122.3	11.9	66.0
July	340.9	576.1	917.0	58.7	59.2	62.2	121.4	11.7	66.5
August	344.4	581.3	925.6	59.2	58.4	62.1	120.5	11.5	66.9
September	346.9	586.7	933.6	59.7	58.1	61.6	119.6	11.4	67.3

	EMPLOYED			<i>Employment to population ratio</i>	UNEMPLOYED			LABOUR FORCE	
	<i>Full-time</i>	<i>Part-time</i>	<i>Total</i>		<i>Looked for full-time work</i>	<i>Looked for part-time work only</i>	<i>Total</i>	<i>Unemployment rate</i>	<i>Participation rate</i>
	'000	'000	'000		%	'000	'000	'000	%
PERSONS									
September 2014	879.0	916.4	1 790.1	57.4	155.7	127.6	286.4	13.8	66.6
September 2015	874.7	962.9	1 833.3	58.4	158.4	111.4	272.2	12.9	67.2
2016									
September	823.1	1 018.7	1 840.1	58.1	155.8	113.5	271.3	12.9	66.6
October	824.6	998.9	1 828.3	57.7	155.5	108.3	263.6	12.6	65.9
November	810.2	1 002.3	1 820.7	57.5	162.5	123.6	288.3	13.7	66.3
December	818.3	1 018.3	1 823.5	57.6	165.7	114.5	278.1	13.1	66.9
2017									
January	826.8	1 029.3	1 847.0	58.2	150.3	113.6	261.7	12.3	66.8
February	826.2	1 010.3	1 832.6	57.6	158.4	120.4	278.3	13.2	66.5
March	852.6	997.5	1 849.7	58.0	157.9	122.7	281.5	13.2	66.8
April	830.4	1 024.2	1 856.5	58.2	167.1	109.1	273.3	12.8	66.8
May	856.5	998.8	1 857.8	58.2	142.2	120.5	268.9	12.7	66.4
June	848.9	997.0	1 857.2	58.2	149.3	129.9	278.3	13.1	66.6
July	860.2	1 010.5	1 869.7	58.5	144.9	129.8	276.5	12.9	67.2
August	856.8	1 039.8	1 893.5	59.2	150.4	124.3	276.2	12.7	67.9
September	853.8	1 050.1	1 901.6	59.4	151.4	120.4	274.9	12.6	67.9
MALES									
September 2014	524.2	389.1	913.3	57.2	93.8	59.8	153.6	14.4	66.8
September 2015	528.3	407.3	935.6	58.2	96.2	56.7	152.9	14.0	67.7
2016									
September	488.7	448.6	937.2	57.8	97.9	53.1	151.0	13.9	67.1
October	480.8	439.9	920.8	56.8	98.8	53.4	152.2	14.2	66.2
November	473.3	446.6	919.9	56.8	102.3	54.1	156.5	14.5	66.5
December	484.4	446.5	930.9	57.5	99.8	61.0	160.8	14.7	67.4
2017									
January	495.9	442.4	938.3	57.8	93.3	56.1	149.4	13.7	67.0
February	502.2	435.5	937.7	57.6	94.7	63.6	158.2	14.4	67.3
March	519.8	432.6	952.4	58.3	91.0	64.5	155.5	14.0	67.9
April	513.3	454.2	967.5	59.3	92.7	56.5	149.2	13.4	68.4
May	515.1	435.1	950.2	58.2	80.0	64.4	144.4	13.2	67.1
June	519.1	418.8	937.9	57.5	95.8	59.1	154.9	14.2	67.0
July	514.3	444.4	958.7	58.7	90.3	64.4	154.7	13.9	68.2
August	507.7	460.2	967.9	59.2	89.7	62.9	152.6	13.6	68.6
September	510.3	449.5	959.8	58.7	88.3	65.3	153.7	13.8	68.1
FEMALES									
September 2014	354.8	527.3	882.1	57.9	61.9	67.8	129.7	12.8	66.4
September 2015	346.4	555.6	901.9	58.9	62.3	54.7	117.0	11.5	66.5
2016									
September	334.4	570.2	904.6	58.5	57.9	60.4	118.3	11.6	66.1
October	343.8	558.9	902.7	58.3	56.7	54.9	111.6	11.0	65.6
November	336.9	555.7	892.6	57.7	60.2	69.5	129.7	12.7	66.1
December	333.9	571.7	905.6	58.6	65.9	53.5	119.4	11.7	66.3
2017									
January	330.9	586.9	917.9	59.2	57.0	57.5	114.4	11.1	66.6
February	324.0	574.9	898.9	57.8	63.7	56.9	120.6	11.8	65.6
March	332.8	564.9	897.7	57.6	66.9	58.2	125.1	12.2	65.6
April	317.1	570.0	887.2	56.9	74.3	52.6	126.9	12.5	65.0
May	341.4	563.7	905.0	58.0	62.2	56.0	118.3	11.6	65.6
June	329.8	578.2	908.0	58.2	53.5	70.8	124.3	12.0	66.2
July	345.9	566.1	912.0	58.4	54.7	65.4	120.0	11.6	66.1
August	349.1	579.6	928.6	59.4	60.7	61.4	122.2	11.6	67.2
September	343.5	600.6	944.1	60.3	63.1	55.0	118.1	11.1	67.8

	EMPLOYED				UNEMPLOYED				LABOUR FORCE		Not in the labour force (NILF)	Civ. pop. aged 15-24
	Full-time	Part-time	Total	Emp. to pop. ratio	Looked for full- time	Looked for part- time only	Total	Unemp. rate	Total	Part. rate		
	'000	'000	'000	%	'000	'000	'000	%	'000	%		
ATTENDING FULL-TIME EDUCATION												
Persons												
September 2014	34.2	608.9	643.2	38.9	25.8	110.3	136.1	17.5	779.2	47.1	874.3	1 653.5
September 2015	42.5	632.8	675.4	40.4	20.4	97.2	117.6	14.8	793.0	47.4	880.6	1 673.6
September 2016	34.1	688.8	722.8	41.7	25.2	97.6	122.9	14.5	845.7	48.8	888.1	1 733.7
September 2017	43.7	692.3	735.9	42.7	25.1	100.0	125.0	14.5	861.0	50.0	862.0	1 723.0
Males												
September 2014	15.4	248.1	263.5	32.8	14.8	58.0	72.8	21.6	336.3	41.9	466.0	802.2
September 2015	25.7	260.5	286.2	35.0	12.3	52.7	65.0	18.5	351.2	42.9	467.3	818.5
September 2016	17.6	297.9	315.6	37.6	9.3	49.1	58.4	15.6	374.0	44.6	465.0	839.0
September 2017	26.8	301.4	328.2	38.2	14.4	59.5	73.9	18.4	402.1	46.8	456.3	858.3
Females												
September 2014	18.9	360.9	379.7	44.6	11.0	52.3	63.3	14.3	443.0	52.0	408.3	851.3
September 2015	16.8	372.4	389.2	45.5	8.1	44.5	52.6	11.9	441.8	51.7	413.3	855.1
September 2016	16.4	390.8	407.3	45.5	15.9	48.5	64.4	13.7	471.7	52.7	423.1	894.8
September 2017	16.9	390.8	407.7	47.2	10.7	40.5	51.2	11.2	458.9	53.1	405.7	864.6
NOT ATTENDING FULL-TIME EDUCATION												
Persons												
September 2014	805.7	319.2	1 124.9	76.7	116.9	17.1	134.0	10.6	1 258.9	85.9	207.5	1 466.4
September 2015	792.7	342.9	1 135.6	77.5	125.1	14.5	139.5	10.9	1 275.1	87.1	189.6	1 464.7
September 2016	751.3	343.8	1 095.1	76.3	118.2	15.7	133.9	10.9	1 229.0	85.7	205.7	1 434.7
September 2017	770.5	372.3	1 142.9	77.2	114.4	20.7	135.1	10.6	1 278.0	86.4	201.8	1 479.7
Males												
September 2014	489.1	147.1	636.2	80.1	71.3	4.4	75.6	10.6	711.9	89.6	82.8	794.7
September 2015	482.4	153.5	636.0	80.7	76.3	6.3	82.5	11.5	718.5	91.1	70.0	788.4
September 2016	452.5	158.0	610.5	78.1	81.1	5.8	86.9	12.5	697.4	89.2	84.6	782.0
September 2017	464.4	155.3	619.7	79.7	67.0	8.1	75.1	10.8	694.8	89.3	82.9	777.7
Females												
September 2014	316.6	172.1	488.7	72.8	45.6	12.7	58.4	10.7	547.1	81.4	124.6	671.7
September 2015	310.3	189.3	499.7	73.9	48.8	8.2	57.0	10.2	556.7	82.3	119.6	676.2
September 2016	298.8	185.8	484.6	74.2	37.2	9.8	47.0	8.8	531.6	81.4	121.1	652.7
September 2017	306.2	217.0	523.2	74.5	47.4	12.6	60.0	10.3	583.2	83.1	118.9	702.0
TOTAL												
Persons												
September 2014	840.0	928.1	1 768.1	56.7	142.7	127.4	270.1	13.3	2 038.2	65.3	1 081.7	3 119.9
September 2015	835.3	975.7	1 811.0	57.7	145.5	111.7	257.2	12.4	2 068.2	65.9	1 070.2	3 138.3
September 2016	785.3	1 032.6	1 817.9	57.4	143.5	113.3	256.8	12.4	2 074.7	65.5	1 093.8	3 168.5
September 2017	814.2	1 064.6	1 878.8	58.7	139.5	120.7	260.1	12.2	2 138.9	66.8	1 063.8	3 202.7
Males												
September 2014	504.5	395.2	899.7	56.3	86.1	62.4	148.4	14.2	1 048.1	65.6	548.8	1 596.9
September 2015	508.1	414.0	922.1	57.4	88.6	59.0	147.6	13.8	1 069.7	66.6	537.3	1 607.0
September 2016	470.2	455.9	926.0	57.1	90.4	55.0	145.4	13.6	1 071.4	66.1	549.6	1 621.0
September 2017	491.1	456.7	947.9	57.9	81.4	67.5	149.0	13.6	1 096.8	67.0	539.2	1 636.0
Females												
September 2014	335.5	532.9	868.4	57.0	56.6	65.1	121.6	12.3	990.1	65.0	532.9	1 523.0
September 2015	327.2	561.7	888.9	58.0	56.9	52.7	109.6	11.0	998.5	65.2	532.9	1 531.4
September 2016	315.2	576.7	891.9	57.6	53.1	58.3	111.4	11.1	1 003.3	64.8	544.2	1 547.4
September 2017	323.1	607.8	930.9	59.4	58.1	53.1	111.2	10.7	1 042.1	66.5	524.6	1 566.7

	EMPLOYED				UNEMPLOYED				LABOUR FORCE		Not in the labour force (NILF)	Civ. pop. aged 15-24
	Full- time	Part- time	Total	Emp. to pop. ratio	Looked for full- time	Looked for part- time only	Total	Unemp. rate	Total	Part. rate		
	'000	'000	'000	%	'000	'000	'000	%	'000	%		
ATTENDING FULL-TIME EDUCATION												
New South Wales	22.1	218.1	240.3	43.0	*4.3	30.8	35.1	12.8	275.4	49.3	283.2	558.7
Victoria	8.6	188.7	197.3	40.4	9.1	31.3	40.4	17.0	237.6	48.7	250.3	488.0
Queensland	8.0	145.9	153.9	50.0	*4.6	20.2	24.8	13.9	178.7	58.0	129.4	308.1
South Australia	*1.6	42.4	44.0	37.1	*2.5	5.0	7.4	14.4	51.4	43.3	67.3	118.7
Western Australia	*0.9	65.1	65.9	38.9	*2.7	9.7	12.4	15.8	78.3	46.2	91.1	169.5
Tasmania	*0.7	12.3	13.0	40.6	1.6	*1.1	2.6	16.8	15.7	48.7	16.5	32.2
Northern Territory	0.5	5.5	6.0	43.7	*—	0.4	0.4	5.6	6.3	46.3	7.3	13.7
Australian Capital Territory	*1.2	14.3	15.5	45.3	*0.3	*1.6	1.9	10.9	17.4	50.9	16.8	34.2
Australia	43.7	692.3	735.9	42.7	25.1	100.0	125.0	14.5	861.0	50.0	862.0	1 723.0
NOT ATTENDING FULL-TIME EDUCATION												
New South Wales	259.5	108.5	368.1	79.3	25.9	*5.6	31.5	7.9	399.6	86.1	64.4	464.0
Victoria	167.9	91.4	259.3	77.4	26.5	4.6	31.0	10.7	290.4	86.7	44.6	335.0
Queensland	175.2	85.3	260.4	75.3	30.9	*3.8	34.7	11.8	295.1	85.3	50.7	345.8
South Australia	44.0	29.6	73.5	75.4	10.7	*1.4	12.1	14.1	85.6	87.8	11.9	97.5
Western Australia	83.1	44.1	127.2	76.3	15.4	4.7	20.1	13.7	147.4	88.4	19.3	166.6
Tasmania	18.4	7.7	26.1	78.2	2.6	*0.3	2.9	9.9	29.0	86.7	4.4	33.4
Northern Territory	12.0	2.3	14.2	74.2	1.2	*—	1.2	8.0	15.5	80.6	3.7	19.2
Australian Capital Territory	10.5	3.4	14.0	76.4	*1.2	*0.3	*1.5	*9.7	15.5	84.7	2.8	18.3
Australia	770.5	372.3	1 142.9	77.2	114.4	20.7	135.1	10.6	1 278.0	86.4	201.8	1 479.7
TOTAL												
New South Wales	281.7	326.7	608.3	59.5	30.2	36.4	66.7	9.9	675.0	66.0	347.6	1 022.6
Victoria	176.6	280.0	456.6	55.5	35.6	35.8	71.4	13.5	528.0	64.2	294.9	822.9
Queensland	183.2	231.1	414.3	63.4	35.5	24.0	59.5	12.6	473.8	72.5	180.1	653.9
South Australia	45.6	72.0	117.5	54.4	13.2	6.4	19.5	14.2	137.1	63.4	79.1	216.2
Western Australia	83.9	109.2	193.2	57.5	18.1	14.4	32.5	14.4	225.7	67.1	110.4	336.1
Tasmania	19.1	20.1	39.2	59.7	4.2	*1.3	5.5	12.3	44.7	68.1	20.9	65.6
Northern Territory	12.5	7.8	20.2	61.5	1.2	0.4	1.6	7.3	21.8	66.4	11.1	32.9
Australian Capital Territory	11.7	17.7	29.5	56.1	*1.5	1.9	3.4	10.3	32.9	62.6	19.6	52.5
Australia	814.2	1 064.6	1 878.8	58.7	139.5	120.7	260.1	12.2	2 138.9	66.8	1 063.8	3 202.7

* estimate is subject to sampling variability too high for most practical purposes

— nil or rounded to zero (including null cells)

LABOUR FORCE STATUS IN SEPTEMBER 2017

	<i>Employed full-time</i>	<i>Employed part-time</i>	<i>Employed total</i>	<i>Unemployed</i>	<i>Labour force</i>	<i>Not in the labour force (NILF)</i>	<i>Total</i>
<i>Labour force status in August 2017</i>	'000	'000	'000	'000	'000	'000	'000
PERSONS							
Matched sample							
Employed full-time	6 224.6	337.6	6 562.2	35.7	6 597.9	81.7	6 679.6
Employed part-time	344.9	2 608.4	2 953.3	38.1	2 991.4	144.2	3 135.6
Employed total	6 569.5	2 946.0	9 515.5	73.8	9 589.3	225.9	9 815.2
Unemployed	51.0	75.3	126.4	329.4	455.8	120.4	576.2
Labour force	6 620.5	3 021.3	9 641.8	403.2	10 045.0	346.3	10 391.4
Not in the labour force (NILF)	73.4	164.3	237.7	141.9	379.6	5 012.2	5 391.7
Total	6 693.9	3 185.6	9 879.5	545.1	10 424.6	5 358.5	15 783.1
Unmatched sample							
Unmatched in common sample	698.8	255.4	954.2	62.2	1 016.4	816.2	1 832.5
Incoming rotation group	969.7	478.8	1 448.5	84.4	1 533.0	790.8	2 323.7
Total	1 668.5	734.2	2 402.7	146.6	2 549.3	1 606.9	4 156.3
Civilian population aged 15 years and over	8 362.4	3 919.8	12 282.2	691.7	12 973.9	6 965.4	19 939.4
MALES							
Matched sample							
Employed full-time	4 043.8	136.7	4 180.5	26.8	4 207.3	43.3	4 250.6
Employed part-time	153.8	735.1	888.9	17.8	906.7	59.6	966.4
Employed total	4 197.6	871.7	5 069.4	44.6	5 114.0	102.9	5 216.9
Unemployed	36.3	32.6	68.9	185.6	254.4	54.3	308.7
Labour force	4 233.9	904.3	5 138.2	230.2	5 368.4	157.2	5 525.7
Not in the labour force (NILF)	42.8	60.0	102.8	67.8	170.6	2 078.4	2 249.0
Total	4 276.7	964.3	5 241.1	298.0	5 539.0	2 235.6	7 774.7
Unmatched sample							
Unmatched in common sample	439.1	90.4	529.5	32.4	561.9	340.3	902.2
Incoming rotation group	617.6	153.3	770.9	43.6	814.5	314.2	1 128.8
Total	1 056.8	243.7	1 300.4	76.0	1 376.4	654.5	2 031.0
Civilian population aged 15 years and over	5 333.5	1 208.0	6 541.5	373.9	6 915.4	2 890.2	9 805.6
FEMALES							
Matched sample							
Employed full-time	2 180.8	200.9	2 381.7	8.9	2 390.6	38.4	2 429.0
Employed part-time	191.1	1 873.3	2 064.4	20.3	2 084.7	84.6	2 169.2
Employed total	2 371.9	2 074.2	4 446.1	29.2	4 475.3	123.0	4 598.3
Unemployed	14.7	42.8	57.5	143.9	201.3	66.1	267.4
Labour force	2 386.5	2 117.0	4 503.6	173.0	4 676.6	189.1	4 865.7
Not in the labour force (NILF)	30.6	104.3	134.9	74.1	208.9	2 933.8	3 142.8
Total	2 417.1	2 221.3	4 638.5	247.1	4 885.6	3 122.9	8 008.4
Unmatched sample							
Unmatched in common sample	259.7	165.0	424.6	29.8	454.5	475.9	930.3
Incoming rotation group	352.1	325.5	677.6	40.8	718.4	476.5	1 195.0
Total	611.8	490.5	1 102.3	70.7	1 172.9	952.4	2 125.3
Civilian population aged 15 years and over	3 028.9	2 711.8	5 740.7	317.8	6 058.5	4 075.3	10 133.8

	EMPLOYED TOTAL		EMPLOYED FULL-TIME		EMPLOYED PART-TIME	
	<i>Trend</i>	<i>Seasonally adjusted</i>	<i>Trend</i>	<i>Seasonally adjusted</i>	<i>Trend</i>	<i>Seasonally adjusted</i>
	millions	millions	millions	millions	millions	millions
PERSONS						
September 2014	1 618.1	1 617.7	1 363.2	1 361.9	254.8	255.8
September 2015	1 652.4	1 654.9	1 385.5	1 388.6	267.0	266.3
2016						
September	1 666.4	1 661.4	1 387.0	1 378.8	279.4	282.6
October	1 669.2	1 672.7	1 388.9	1 394.3	280.3	278.4
November	1 671.2	1 669.2	1 390.2	1 388.4	280.9	280.8
December	1 672.6	1 676.1	1 391.2	1 395.3	281.4	280.8
2017						
January	1 674.4	1 681.5	1 392.4	1 398.5	281.9	283.1
February	1 677.4	1 668.3	1 394.9	1 385.5	282.6	282.8
March	1 682.0	1 678.7	1 398.9	1 397.1	283.1	281.6
April	1 688.0	1 680.0	1 404.5	1 396.4	283.5	283.6
May	1 694.8	1 706.6	1 411.1	1 421.7	283.7	284.9
June	1 701.3	1 708.4	1 417.4	1 423.9	283.8	284.5
July	1 706.8	1 700.5	1 422.9	1 417.5	283.9	283.0
August	1 711.4	1 707.0	1 427.4	1 424.0	284.0	283.1
September	1 714.5	1 718.2	1 430.4	1 433.5	284.0	284.7
MALES						
September 2014	986.4	985.2	910.0	908.4	76.4	76.7
September 2015	998.4	1 001.0	918.1	920.5	80.3	80.5
2016						
September	1 003.0	1 000.3	915.8	910.8	87.3	89.5
October	1 004.7	1 007.4	917.5	920.2	87.3	87.2
November	1 005.9	1 003.3	918.9	916.6	87.0	86.7
December	1 006.8	1 008.6	920.2	922.4	86.6	86.2
2017						
January	1 007.7	1 014.5	921.4	929.1	86.3	85.4
February	1 009.3	1 002.1	923.1	915.6	86.3	86.5
March	1 011.6	1 006.8	925.3	920.9	86.3	85.9
April	1 014.5	1 016.1	928.2	928.7	86.3	87.4
May	1 017.7	1 023.4	931.8	936.4	86.0	87.0
June	1 021.0	1 020.9	935.5	936.9	85.5	84.0
July	1 023.9	1 022.2	938.8	936.8	85.1	85.4
August	1 026.5	1 023.5	941.8	939.3	84.7	84.2
September	1 028.3	1 031.7	943.9	946.9	84.4	84.7
FEMALES						
September 2014	631.7	632.6	453.3	453.5	178.4	179.1
September 2015	654.1	653.8	467.4	468.1	186.7	185.7
2016						
September	663.4	661.1	471.3	468.0	192.1	193.1
October	664.5	665.3	471.4	474.1	193.0	191.2
November	665.3	666.0	471.3	471.9	194.0	194.1
December	665.8	667.5	471.0	472.9	194.8	194.6
2017						
January	666.6	667.0	471.0	469.4	195.6	197.6
February	668.1	666.2	471.8	469.9	196.3	196.3
March	670.4	671.9	473.6	476.2	196.8	195.7
April	673.6	663.8	476.3	467.7	197.3	196.2
May	677.0	683.3	479.3	485.3	197.7	197.9
June	680.3	687.5	482.0	487.0	198.3	200.5
July	682.9	678.3	484.0	480.7	198.8	197.6
August	684.9	683.5	485.6	484.7	199.3	198.8
September	686.2	686.5	486.6	486.6	199.6	199.9

MONTHLY HOURS WORKED IN ALL JOBS

	New South Wales	Victoria	Queensland	South Australia	Western Australia	Tasmania	Northern Territory	Australian Capital Territory	Australia
	millions	millions	millions	millions	millions	millions	millions	millions	millions

TREND

September 2014	506.2	395.0	329.5	111.6	195.5	31.6	19.7	28.9	1 618.1
September 2015	527.8	406.6	335.9	108.2	193.0	32.0	20.3	28.6	1 652.4
2016									
September	531.6	422.2	334.5	109.7	186.8	31.7	20.6	29.4	1 666.4
October	531.9	423.8	334.2	110.2	187.5	31.7	20.5	29.4	1 669.2
November	531.7	425.0	333.9	110.5	188.3	31.8	20.6	29.3	1 671.2
December	531.0	426.0	334.0	110.6	189.2	31.9	20.7	29.3	1 672.6
2017									
January	530.6	426.7	334.4	110.7	189.9	32.0	20.8	29.2	1 674.4
February	531.0	427.6	335.4	110.9	190.4	32.2	20.7	29.2	1 677.4
March	532.5	428.7	336.9	111.2	190.7	32.3	20.6	29.2	1 682.0
April	534.8	430.0	338.5	111.6	191.2	32.5	20.3	29.2	1 688.0
May	537.3	431.5	340.2	112.0	191.9	32.6	20.0	29.4	1 694.8
June	539.5	433.0	341.7	112.4	192.8	32.7	19.7	29.5	1 701.3
July	541.3	434.0	342.9	112.7	193.9	32.7	19.5	29.7	1 706.8
August	542.7	434.7	344.1	112.9	195.0	32.8	19.4	29.8	1 711.4
September	543.7	435.0	344.8	112.9	195.8	32.8	19.3	30.1	1 714.5

SEASONALLY ADJUSTED

September 2014	504.1	397.8	329.3	111.5	195.0	31.5	np	np	1 617.7
September 2015	526.1	406.9	338.7	109.1	192.6	32.4	np	np	1 654.9
2016									
September	531.1	421.5	332.5	109.4	185.2	31.9	np	np	1 661.4
October	536.3	419.2	336.7	111.0	188.3	31.4	np	np	1 672.7
November	530.7	425.4	333.5	109.5	188.3	31.3	np	np	1 669.2
December	532.8	428.4	333.2	110.9	188.9	31.6	np	np	1 676.1
2017									
January	530.0	429.9	336.0	112.7	191.3	33.2	np	np	1 681.5
February	528.8	426.8	332.0	108.8	189.4	32.0	np	np	1 668.3
March	530.3	426.3	337.3	110.8	192.1	31.6	np	np	1 678.7
April	531.9	424.5	339.0	112.2	190.0	32.5	np	np	1 680.0
May	544.5	434.1	343.1	111.7	191.0	32.9	np	np	1 706.6
June	541.0	439.8	340.4	112.6	193.0	32.9	np	np	1 708.4
July	537.6	432.1	341.6	113.5	194.3	32.7	np	np	1 700.5
August	541.7	431.9	344.2	112.7	194.7	32.5	np	np	1 707.0
September	545.2	434.6	346.0	112.3	196.9	32.8	np	np	1 718.2

np not available for publication but included in totals where applicable, unless otherwise indicated

	UNDEREMPLOYED TOTAL			UNDEREMPLOYMENT RATE			UNDERUTILISATION RATE		
	<i>Trend</i>	<i>Seasonally adjusted</i>	<i>Original</i>	<i>Trend</i>	<i>Seasonally adjusted</i>	<i>Original</i>	<i>Trend</i>	<i>Seasonally adjusted</i>	<i>Original</i>
	'000	'000	'000	%	%	%	%	%	%
PERSONS									
August 2013	932.0	951.0	917.3	7.7	7.8	7.6	13.5	13.8	13.3
August 2014	1 008.0	1 015.4	1 041.3	8.2	8.3	8.5	14.4	14.4	14.4
August 2015	1 049.9	1 042.7	1 021.9	8.4	8.3	8.2	14.3	14.4	14.3
2016									
February	1 056.4	1 041.3	1 041.3	8.4	8.2	8.2	14.1	13.9	14.4
May	1 065.2	1 063.2	1 043.7	8.4	8.4	8.2	14.1	14.2	13.9
August	1 077.6	1 103.1	1 082.4	8.5	8.7	8.6	14.2	14.3	14.2
November	1 096.8	1 059.1	1 090.0	8.6	8.3	8.6	14.4	14.1	14.0
2017									
February	1 112.7	1 136.4	1 135.4	8.7	8.9	8.8	14.4	14.7	15.2
May	1 124.3	1 129.4	1 107.4	8.7	8.8	8.6	14.4	14.3	14.0
August	1 129.8	1 115.3	1 091.0	8.7	8.6	8.5	14.2	14.1	14.0
MALES									
August 2013	385.3	391.5	383.3	5.9	6.0	5.9	11.7	11.9	11.6
August 2014	423.9	429.3	440.1	6.4	6.5	6.6	12.5	12.5	12.6
August 2015	435.7	431.9	416.3	6.5	6.4	6.2	12.4	12.5	12.5
2016									
February	452.3	446.2	444.6	6.7	6.6	6.5	12.3	12.2	12.5
May	462.3	460.2	450.7	6.8	6.8	6.6	12.4	12.5	12.2
August	467.2	484.2	467.4	6.9	7.1	6.9	12.5	12.6	12.6
November	469.2	449.9	456.6	6.9	6.6	6.7	12.6	12.3	12.1
2017									
February	470.3	478.6	475.9	6.9	7.0	6.9	12.5	12.7	13.0
May	473.9	474.7	463.8	6.9	6.9	6.7	12.4	12.4	12.1
August	478.7	475.1	459.2	6.9	6.8	6.7	12.3	12.3	12.2
FEMALES									
August 2013	546.6	559.5	533.9	9.8	10.0	9.7	15.6	15.9	15.2
August 2014	584.1	586.2	601.2	10.4	10.4	10.6	16.6	16.6	16.5
August 2015	614.1	610.8	605.5	10.6	10.5	10.5	16.6	16.7	16.5
2016									
February	604.0	595.1	596.7	10.3	10.1	10.1	16.2	16.0	16.5
May	602.9	603.0	593.0	10.2	10.3	10.1	16.1	16.1	15.8
August	610.3	619.0	615.0	10.4	10.5	10.5	16.2	16.3	16.1
November	627.7	609.2	633.5	10.6	10.3	10.7	16.5	16.2	16.1
2017									
February	642.5	657.9	659.5	10.8	11.1	11.0	16.6	17.1	17.6
May	650.4	654.8	643.6	10.8	10.9	10.7	16.6	16.6	16.3
August	651.0	640.2	631.8	10.8	10.5	10.5	16.4	16.2	16.0

	UNDEREMPLOYED TOTAL			UNDEREMPLOYMENT RATE			UNDERUTILISATION RATE		
	Trend	Seasonally Adjusted	Original	Trend	Seasonally Adjusted	Original	Trend	Seasonally Adjusted	Original
	'000	'000	'000	%	%	%	%	%	%
PERSONS									
New South Wales	315.2	309.3	312.7	7.7	7.6	7.7	12.6	12.4	12.7
Victoria	290.2	292.0	286.6	8.6	8.6	8.6	14.8	14.9	14.7
Queensland	233.3	228.7	227.4	9.1	8.8	8.8	14.9	14.4	14.5
South Australia	87.2	86.4	84.1	9.9	9.9	9.7	16.0	15.5	15.1
Western Australia	145.7	139.9	131.5	10.1	9.6	9.2	15.4	15.2	14.9
Tasmania	28.4	30.0	28.9	10.9	11.5	11.1	17.0	17.6	17.3
Northern Territory	6.4	np	5.7	4.6	np	4.1	7.8	np	8.4
Australian Capital Territory	14.4	np	14.2	6.3	np	6.3	10.2	np	10.4
Australia	1 129.8	1 115.3	1 091.0	8.7	8.6	8.5	14.2	14.1	14.0
MALES									
New South Wales	129.3	126.3	127.8	5.9	5.8	5.9	11.0	10.9	11.2
Victoria	130.0	132.7	125.8	7.2	7.4	7.0	13.0	13.1	12.8
Queensland	96.1	96.5	93.4	7.1	7.1	6.9	12.8	12.4	12.4
South Australia	35.8	36.1	33.6	7.7	7.8	7.2	13.2	12.6	12.5
Western Australia	64.7	60.8	59.7	8.2	7.7	7.6	13.3	13.1	13.5
Tasmania	11.6	12.6	10.8	8.5	9.1	7.9	15.1	16.0	14.7
Northern Territory	3.6	np	2.8	4.6	np	3.7	8.1	np	8.9
Australian Capital Territory	5.9	np	5.3	5.1	np	4.6	9.5	np	9.3
<i>Australia</i>	<i>478.7</i>	<i>475.1</i>	<i>459.2</i>	<i>6.9</i>	<i>6.8</i>	<i>6.7</i>	<i>12.3</i>	<i>12.3</i>	<i>12.2</i>
FEMALES									
New South Wales	185.9	183.1	184.9	9.8	9.7	9.8	14.5	14.2	14.4
Victoria	160.2	159.3	160.8	10.2	10.1	10.3	16.9	17.0	16.8
Queensland	137.2	132.2	133.9	11.2	10.7	11.0	17.2	16.6	16.7
South Australia	51.4	50.3	50.5	12.5	12.2	12.4	19.1	18.7	18.1
Western Australia	81.1	79.1	71.8	12.3	11.9	11.0	18.0	17.7	16.6
Tasmania	16.8	17.4	18.1	13.6	14.2	14.7	19.2	19.4	20.2
Northern Territory	2.8	np	2.8	4.5	np	4.5	7.5	np	7.9
Australian Capital Territory	8.4	np	8.9	7.5	np	8.0	10.9	np	11.5
<i>Australia</i>	<i>651.0</i>	<i>640.2</i>	<i>631.8</i>	<i>10.8</i>	<i>10.5</i>	<i>10.5</i>	<i>16.4</i>	<i>16.2</i>	<i>16.0</i>

np not available for publication but included in totals where applicable, unless otherwise indicated

WHAT IF...? REVISIONS TO TREND ESTIMATES

EFFECT OF NEW SEASONALLY ADJUSTED ESTIMATES ON TREND ESTIMATES

TREND REVISIONS

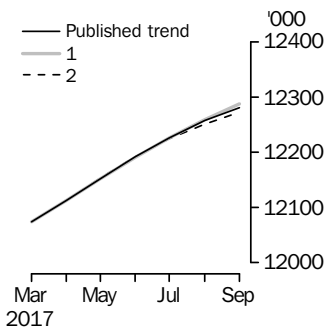
Each time new seasonally adjusted estimates become available, trend estimates are revised. This revision is a combined result of the concurrent seasonal adjustment process and the application of surrogates of the Henderson average to the seasonally adjusted series (see paragraphs 28 to 37 of the Explanatory Notes).

The examples in the tables below show two illustrative scenarios and the consequent revisions to previous trend estimates of employment and the unemployment rate. The revisions in the scenarios are due to the use of surrogates of the Henderson average, as the impact of revision of seasonally adjusted estimates can not be estimated in advance.

- (1) The October seasonally adjusted estimate is *higher* than September by:
 - 0.22% for employment
 - 2.26% for the unemployment rate
- (2) The October seasonally adjusted estimate is *lower* than September by:
 - 0.22% for employment
 - 2.26% for the unemployment rate

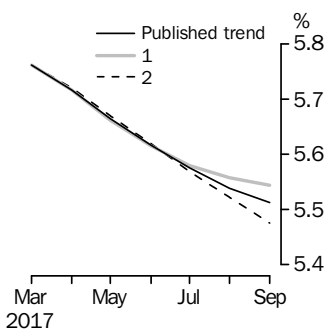
The percentage changes of 0.22% and 2.26% represent the average absolute monthly percentage changes in employment and the unemployment rate respectively. Estimates in the graphs have been calculated using unrounded estimates, and may be different from, but more accurate than, rounded estimates depicted in the corresponding table.

EMPLOYMENT



	Trend as published	WHAT IF NEXT MONTH'S SEASONALLY ADJUSTED ESTIMATE IS:	
		(1) 12 317.2 i.e. rises by 0.22%	(2) 12 263.2 i.e. falls by 0.22%
2017			
June	12 191.2	12 191.1	12 192.0
July	12 226.4	12 226.7	12 224.3
August	12 257.5	12 259.0	12 250.9
September	12 281.2	12 287.3	12 272.2

UNEMPLOYMENT RATE



	Trend as published	WHAT IF NEXT MONTH'S SEASONALLY ADJUSTED ESTIMATE IS:	
		(1) 5.6 i.e. rises by 2.26%	(2) 5.4 i.e. falls by 2.26%
2017			
June	5.6	5.6	5.6
July	5.6	5.6	5.6
August	5.5	5.6	5.5
September	5.5	5.5	5.5

EXPLANATORY NOTES

INTRODUCTION

1 This publication contains estimates of the civilian labour force derived from the Labour Force Survey component of the Monthly Population Survey. The full time series for estimates from this publication are also available electronically. More detailed estimates are released one week after this publication in various electronic formats – see *Labour Force, Australia, Detailed – Electronic Delivery* (cat. no. 6291.0.55.001) and *Labour Force, Australia, Detailed, Quarterly* (cat. no. 6291.0.55.003).

CONCEPTS, SOURCES AND METHODS

2 The conceptual framework used in Australia's Labour Force Survey aligns closely with the standards and guidelines set out in Resolutions of International Conferences of Labour Statisticians. Descriptions of the underlying concepts and structure of Australia's labour force statistics, and the sources and methods used in compiling the estimates, are presented in *Labour Statistics: Concepts, Sources and Methods* (cat. no. 6102.0.55.001) which is available on the ABS website <<http://www.abs.gov.au>>.

LABOUR FORCE SURVEY

3 The Labour Force Survey is based on a multi-stage area sample of private dwellings (currently approximately 26,000 houses, flats, etc.), a list sample of non-private dwellings (hotels, motels, etc.), and covers approximately 0.32% of the civilian population of Australia aged 15 years and over.

4 Information is obtained from the occupants of selected dwellings by specially trained interviewers using computer-assisted interviewing, or self-completion online.

5 Households selected for the Labour Force Survey are interviewed each month for eight months, with one-eighth of the sample being replaced each month. The first interview is generally conducted face-to-face. Subsequent interviews are conducted by telephone (if acceptable to the respondent).

6 From December 2012 to April 2013, the ABS conducted a trial of online electronic data collection. Respondents in a single rotation group (i.e. one-eighth of the survey sample) were offered the option of self completing their labour force survey questionnaire online instead of via a face-to-face or telephone interview. From May 2013, the ABS expanded the offer of online electronic collection to 50% of each new incoming rotation group. For more information see the article in the April 2013 issue of this publication. From September 2013, online electronic collection has been offered to 100% of private dwellings in each incoming rotation group. From April 2014, 100% of private dwellings are being offered online electronic collection.

7 The interviews are generally conducted during the two weeks beginning on the Sunday between the 5th and 11th of each month. The information obtained relates to the week before the interview (i.e. the reference week). Each year, to deal with the operational difficulties involved with collecting and processing the Labour Force Survey around the Christmas and New Year holiday period, interviews for December start four weeks after November interviews start (i.e. between the 3rd and 9th December), and January interviews start five weeks after December interviews start. As a result, January interviewing may commence as early as the 7th or as late as the 13th, depending on the year. Occasionally, circumstances that present significant operational difficulties for survey collection can result in a change to the normal pattern for the start of interviewing.

8 Estimates from the Labour Force Survey are usually published first in this publication 39 days after the commencement of interviews for that month, with the exception of estimates for each December which are usually published 46 days after the commencement of interviews.

EXPLANATORY NOTES *continued*

SCOPE OF SURVEY

9 The Labour Force Survey includes all persons aged 15 years and over except members of the permanent defence forces, certain diplomatic personnel of overseas governments customarily excluded from census and estimated population counts, overseas residents in Australia, and members of non-Australian defence forces (and their dependants) stationed in Australia.

COVERAGE

10 In the Labour Force Survey, coverage rules are applied which aim to ensure that each person is associated with only one dwelling, and hence has only one chance of selection. The coverage rules are necessarily a balance between theoretical and operational considerations. Nevertheless, the chance of a person being enumerated at two separate dwellings in the survey is considered to be negligible.

POPULATION BENCHMARKS

11 The Labour Force Survey estimates are calculated in such a way as to add to independent estimates of the civilian population aged 15 years and over (population benchmarks). These population benchmarks are based on the most recently released estimates of Final, Revised and Preliminary quarterly Estimated Resident Population (ERP). For information on the methodology used to produce the ERP see *Australian Demographic Statistics* (cat. no. 3101.0). Since the most recently released ERP estimates lag the current time period for Labour Force estimates by nine months, the Labour Force population benchmarks are created by projecting forward three quarters past the most recently released quarterly ERP estimates. The projection is based on the historical pattern of each population component – births, deaths, interstate migration and net overseas migration (NOM). Projected estimates of NOM are supplemented with other data sources to better forecast population changes in the short-term. The main data source are the forecasts published by the Department of Immigration & Border Protection in the publication *The Outlook for Net Overseas Migration*.

12 Commencing in March 2010, the ERP series has been revised twice-yearly, in the March and September quarter issues of *Australian Demographic Statistics* (cat. no. 3101.0). This biannual revision cycle incorporates more up to date information available for NOM. This updated information is included in the population benchmarks used in creating the Labour Force estimates when they are rebenchmarked quarterly.

13 Every five years, the ERP series are revised to incorporate additional information available from the latest Census of Population and Housing (Census). Labour Force Survey population benchmarks, and the estimates, are revised following this five-yearly revision in the ERP. The process of incorporating the revised population benchmarks is referred to as 'rebasings'. From the January 2014 issue of this publication, labour force estimates have been compiled using population benchmarks based on the results of the 2011 Census. Revisions were made to historical Labour Force estimates from June 2006 to December 2013. In addition, estimates from July 1991 to May 2006 were revised to reflect population benchmarks based on ERP revised following the 2011 Census. The next rebasing based on the Census will be following the release of the 2016 Census-based ERP estimates, which will incorporate revisions back five years. For more information on revised ERP estimates, refer to the June 2012 issue of *Australian Demographic Statistics* (cat. no. 3101.0) released in December 2012.

14 In between Censuses, the ABS revises the Labour Force population benchmarks using the latest ERP according to the paragraphs above. These were introduced in the July 2010, November 2012 and April 2013 issues. The revisions planned for the October 2013, April 2014 and November 2014 issues were not implemented (see What's New in the Labour Force in the September 2013 issue and Changes in this Issue in the October 2014 issue of this publication). From the February 2015 issue, rebenchmarking were undertaken quarterly in the February, May, August and November issues, apart

EXPLANATORY NOTES *continued*

POPULATION BENCHMARKS

continued

from May 2015. For more information, refer to the article Rebenchmarking of Labour Force Series in the February 2015 issue of this publication.

ESTIMATION METHOD

15 The estimation method used in the Labour Force Survey is Composite Estimation, which was introduced in May 2007. In January 2014 composite estimation was applied to all estimates from July 1991 as part of the 2011 Census rebenchmarking. Composite Estimation combines data collected in the previous six months with current month's data to produce the current month's estimates, thereby exploiting the high correlation between overlapping samples across months in the Labour Force Survey. The Composite Estimator combines the previous and current months' data by applying different factors according to length of time in the survey. After these factors are applied, the seven months of data are weighted to align with current month population benchmarks. For details see *Information Paper: Forthcoming Changes to Labour Force Statistics, 2007* (cat. no. 6292.0).

COMPARABILITY OF SERIES

16 From April 1986, the definition of employed persons was changed to include persons who worked without pay between 1 and 14 hours per week in a family business or on a farm (i.e. contributing family workers). For further information, see paragraphs 22 and 23 of the Explanatory Notes in the February 2003 issue of *Labour Force, Australia* (cat. no. 6203.0).

17 The ABS introduced telephone interviewing into the Labour Force Survey in August 1996. Implementation was phased in for each new sample group from August 1996 to February 1997. During the period of implementation, the new method produced different estimates than would have been obtained under the old methodology. The effect dissipated over the final months of implementation and was no longer discernible from February 1997. The estimates for February 1997 and onwards are directly comparable to estimates for periods prior to August 1996. For further details, see the feature article in the June 1997 issue of *Labour Force, Australia* (cat. no. 6203.0).

18 From April 2001 the Labour Force Survey was conducted using a redesigned questionnaire containing additional data items and some minor definitional changes. The definition of unemployed persons was changed to include all persons who were waiting to start work and were available to start in the reference week. This change was introduced in February 2004, when historical unit record data were revised from April 2001 to January 2004. This revision created a small trend break at April 2001 in unemployed persons and unemployment rate series. For further details, see *Information Paper: Forthcoming Changes to Labour Force Statistics, 2003* (cat. no. 6292.0), released in December 2003. From July 2014 the Labour Force Survey questionnaire was further redesigned and definitional changes made to active job search steps and duration of job search. For further details, see the Glossary and *Information Paper: Forthcoming Changes to Labour Force Statistics, June 2014* (cat. no. 6292.0), released in October 2014.

19 Core labour force series were revised in April 2001 for the period April 1986 to March 2001 for the remaining definitional changes introduced with the redesigned questionnaire, to reduce the impact of the changes on labour force series. For further details, see *Information Paper: Implementing the Redesigned Labour Force Survey Questionnaire* (cat. no. 6295.0) and the 2004 issue of *Information Paper: Questionnaires Used in the Labour Force Survey* (cat. no. 6232.0).

20 In May 2007, an improved method of estimation, known as composite estimation, was introduced into the Labour Force Survey. In introducing this change, the ABS revised unit record data from April 2001 to April 2007 based on the new estimation method. No change was identified in the trend breaks in the unemployed persons and unemployment rate series which arose with the introduction of a redesigned survey form in April 2001 (as noted above in paragraph 18). In January 2014 composite estimation

EXPLANATORY NOTES *continued*

COMPARABILITY OF SERIES

continued

was applied to all estimates from July 1991 as part of the 2011 Census rebenchmarking. For further details, see *Information Paper: Forthcoming Changes to Labour Force Statistics, 2007* (cat. no. 6292.0).

21 As one of a range of ABS savings initiatives for the 2008–09 financial year, there was a 24% reduction in the LFS sample size for the period July 2008 to August 2009, relative to the June 2008 sample size. The sample reduction was reversed from September 2009 to December 2009, with December 2009 estimates being the first produced under the fully reinstated sample.

LABOUR FORCE SURVEY SAMPLE

22 The current Labour Force Survey sample has been selected using information collected in the 2011 Census of Population and Housing.

23 The sample was introduced over four months – May 2013 to August 2013. Two rotation groups (i.e. one-quarter of the survey sample) were introduced each month. During the sample phase-in, the increased sample rotation had an impact on the quality of estimates. Movement standard errors increased by approximately 10%, representing, for example, an increase on the standard error on the Australian monthly change in employment for May 2013 from 27,000 to approximately 29,700.

24 Due to the use of composite estimation, there was a marginal impact on the quality of level estimates. Gross Flows analysis were impacted by the sample phase-in with between 60% to 70% of the sample available for matching between the current and previous months instead of the usual 80%. After full transition to the new sample, the quality of level and movement estimates is at the level designed for under the 2011 sample design and are of similar quality as the 2006 sample design. For further details, see *Information Paper: Labour Force Survey Sample Design* (cat. no. 6269.0) released on 30 May 2013.

RELIABILITY OF ESTIMATES

25 Two types of error are possible in an estimate based on a sample survey: sampling error and non-sampling error.

26 Sampling error occurs because a sample, rather than the entire population, is surveyed. One measure of the likely difference resulting from not including all dwellings in the survey is given by the standard error. There are about two chances in three that a sample estimate will differ by less than one standard error from the figure that would have been obtained if all dwellings had been included in the survey, and about nineteen chances in twenty that the difference will be less than two standard errors. Standard errors of key estimates for the latest month and of movements since the previous month of these estimates are shown in the standard errors section of this publication. Standard errors for other estimates and other movements may be calculated by using the spreadsheet contained in *Labour Force Survey Standard Errors, Data Cube* (cat. no. 6298.0.55.001) which is available free of charge on the ABS website <<http://www.abs.gov.au>>.

27 Non-sampling error arises from inaccuracies in collecting, recording and processing the data. Every effort is made to minimise reporting error by the careful design of questionnaires, intensive training and supervision of interviewers, and efficient data processing procedures. Non-sampling error also arises because information cannot be obtained from all persons selected in the survey. The Australian Labour Force Survey receives a higher level of co-operation from individuals in selected dwellings compared to other countries, with the average response rate over the past 3 years being 93 per cent, and the average rate over the past year being 92.5 per cent (to the nearest quarter of a per cent, in rounded terms). See Glossary for definition of response rate.

EXPLANATORY NOTES *continued*

SEASONAL ADJUSTMENT AND TREND ESTIMATION

28 Any original time series can be thought of as a combination of three broad and distinctly different types of behaviour, each representing the impact of certain types of real world events on the information being collected: systematic calendar related events, short-term irregular fluctuations and long-term cyclical behaviour. A multiplicative decomposition model is applied in the seasonal adjustment of Labour Force Time Series, where the original time series (O) is considered as the product of the underlying trend (T), a systematic calendar related or seasonal component (S) and an irregular component (I). This can be expressed as $O = T * S * I$. The contributions of each of these behaviours varies from series to series, as well as throughout time for a given series, depending on the nature of the interactions of real world events and the data of interest.

29 Seasonal adjustment is a statistical technique that attempts to measure and remove the effects of systematic calendar related patterns including seasonal variation to reveal how a series changes from period to period. Seasonal adjustment does not aim to remove the irregular or non-seasonal influences which may be present in any particular month. This means that month-to-month movements of the seasonally adjusted estimates may not be reliable indicators of trend behaviour.

30 The Labour Force Survey uses the concurrent seasonal adjustment method to derive seasonal factors. Concurrent seasonal adjustment uses data up to the current month to estimate seasonal factors for the current and all previous months. This process can result in revisions each month to estimates for earlier periods. However, in most instances, the only noticeable revisions will be to the seasonally adjusted estimates for the previous month and one year prior to the current month. From the March 2015 issue of this publication, the effects of supplementary surveys are removed prior to the estimation of seasonal factors for key Labour Force series from February 1978 onwards. While this methodology has addressed short term volatility in the seasonally adjusted series arising from changes to the timing and content of the supplementary survey program, in general prior corrections and resulting changed seasonal patterns can be identified and measured to a more reliable degree of certainty after three successive observations (in this case after three years). For further details refer to the October and December 2014 issues of this publication.

31 The revision properties of the seasonally adjusted and trend estimates can be improved by the use of Autoregressive Integrated Moving Average (ARIMA) modelling. ARIMA modelling relies on the characteristics of the series being analysed to project future period data. The projected values are temporary, intermediate values, that are only used internally to improve the estimation of the seasonal factors. The projected data do not affect the original estimates and are discarded at the end of the seasonal adjustment process. The Labour Force Survey uses an ARIMA model for the majority of the individual time series. The ARIMA model is assessed as part of the annual reanalysis. For further details, see the feature article in the October 2004 issue of *Australian Economic Indicators* (cat. no. 1350.0).

32 Seasonal adjustment is able to remove the effect of events which occur at the same time in the survey every year. However, there are some events, like holidays, which are not always at the same time in the survey cycle or which are not at the same time across Australia. The effects of these types of events on Labour Force Survey estimates cannot in all cases be removed, because the pattern of their effects cannot be determined. However, two events for which adjustment is made in the seasonally adjusted series are the January interview start date and the timing of Easter. For further details, see *Information Paper: Forthcoming Changes to Labour Force Statistics* (cat. no. 6292.0) released in December 2003.

EXPLANATORY NOTES *continued*

SEASONAL ADJUSTMENT AND TREND ESTIMATION *continued*

33 While seasonal factors for the complete time series are estimated each month, they will continue to be reviewed annually at a more detailed level to take into account each additional year's original data. This annual review will not normally result in significant changes to published estimates. The review is usually conducted early each year with the results released in this publication shortly thereafter.

34 The smoothing of seasonally adjusted series to produce 'trend' series reduces the impact of the irregular component of the seasonally adjusted series. These trend estimates are derived by applying a 13-term Henderson-weighted moving average to all months except the last six. The last six monthly trend estimates are obtained by applying surrogates of the Henderson average to the seasonally adjusted series. Trend estimates are used to analyse the underlying behaviour of a series over time.

35 While this smoothing technique enables estimates to be produced for the latest month, it does result in revisions in addition to those caused by the revision of seasonally adjusted estimates. Generally, revisions due to the use of surrogates of the Henderson average become smaller, and after three months have a negligible impact on the series.

36 Trend estimates are published for the Northern Territory in table 10 and for the Australian Capital Territory in table 11. Unadjusted series for the two Territories have shown, historically, a high degree of variability, which can lead to considerable revisions to the seasonally adjusted estimates each month when seasonal factors are estimated. For this reason, seasonally adjusted estimates are not currently published for the two Territories. In addition, caution should be exercised in the interpretation of trend estimates for the two Territories, particularly for the three most recent months, where revisions may be relatively large.

37 For further information, see *A Guide to Interpreting Time Series – Monitoring Trends* (cat. no. 1349.0).

RELATED PUBLICATIONS

38 Users may also wish to refer to the following publications and other data products that are available free of charge from the ABS website:

- *Labour Force Survey Standard Products and Data Item Guide* (cat. no. 6103.0)
- *Labour Force, Australia, Detailed* (cat. no. 6291.0.55.001)
- *Labour Force, Australia, Detailed Quarterly* (cat. no. 6291.0.55.003)
- *Labour Force Survey Standard Errors, Data Cube* (cat. no. 6298.0.55.001)
- *Labour force, Australia - Rebenchmarking Estimates* (cat. no. 6202.0.55.003)
- *Labour Statistics: Concepts, Sources and Methods* (cat. no. 6102.0.55.001)
- *Australian Demographic Statistics* (cat. no. 3101.0)
- *Australian Labour Market Statistics* (cat. no. 6105.0)
- *Labour Force, Australia* (cat. no. 6203.0)
- *Information Paper: Outcomes of the Labour Household Surveys Content Review* (cat. no. 6107.0)
- *Information Paper: Questionnaires Used in the Labour Force Survey* (cat. no. 6232.0)
- *Information Paper: Regional Labour Force Statistics* (cat. no. 6262.0)
- *Information Paper: Labour Force Sample Design* (cat. no. 6269.0)
- *Information Paper: Forthcoming Changes to Labour Force Statistics* (cat. no. 6292.0)
- *Information Paper: Expansion of Hours Worked Estimates from the Labour Force Survey* (cat. no. 6290.0.55.001)

39 Current publications and other products released by the ABS are listed on the ABS website <<http://www.abs.gov.au>>. The ABS also issues a daily Release Advice on the website which details products to be released in the week ahead.

EXPLANATORY NOTES *continued*

DATA AVAILABLE ON REQUEST

40 As well as the statistics included in this and related publications, the ABS may have other relevant data available. Inquiries should be made to the Labour Force contact officer on (02) 6252 6525, email <labourforce@abs.gov.au> or to any ABS office.

EFFECTS OF ROUNDING

41 Estimates have been rounded and discrepancies may occur between sums of the component items and totals. Estimates of movement shown in this publication are obtained by taking the difference of unrounded estimates. The movement estimate is then rounded. Where a discrepancy occurs between the reported movement and the difference of the rounded estimates, the reported movement will be more accurate.

EXPLANATORY NOTES *continued*

SYMBOLS AND ABBREVIATIONS

42 SYMBOLS AND ABBREVIATIONS

<i>Symbol</i>	<i>Definition</i>
'000	thousands
%	percentage
ABS	Australian Bureau of Statistics
CAI	computer assisted interviewing
cat. no.	catalogue number
Civ. pop.	civilian population
ERP	estimated resident population
Emp. to pop. ratio	employment to population ratio
f/t	full time
LFS	Labour Force Survey
NILF	not in the Labour Force
Part. rate	participation rate
p/t	part time
pts	percentage points
Seas adj.	seasonally adjusted
TAFE	Technical and Further Education
Unemp. rate	unemployment rate

STANDARD ERRORS

STANDARD ERRORS

The estimates in this publication are based on information gained from the occupants of a sample survey of dwellings. Because the entire population is not surveyed, the published original, seasonally adjusted and trend estimates are subject to sampling error. The most common way of quantifying such sampling error is to calculate the standard error for the published estimate or statistic. For more information, see paragraphs 25 to 27 of the Explanatory Notes.

LEVEL ESTIMATES

To illustrate, let us say the published level estimate for employed persons aged 15–19 years is 700,000 and the associated standard error is 9,000. The standard error is then used to interpret the level estimate of 700,000. For instance, the standard error of 9,000 indicates that:

- There are approximately two chances in three that the real value falls within the range 691,000 to 709,000 (700,000 + or – 9,000)
- There are approximately nineteen chances in twenty that the real value falls within the range 682,000 to 718,000 (700,000 + or – 18,000).

The real value in this case is the result we would obtain if we could enumerate the total population.

The following table shows the standard errors for this month's level estimates.

											AUSTRALIA										
											Males	Females	Persons								
											NSW	Vic.	Qld	SA	WA	Tas.	NT	ACT			
Aged 15 years and over																					
Employed																					
Full time	'000	25.9	18.9	17.4	7.4	11.3	2.9	2.3	2.9	32.1	23.7	39.0									
Part time	'000	18.9	12.8	12.3	5.7	8.4	2.3	0.8	2.0	14.2	22.2	27.4									
Total	'000	28.4	23.4	20.1	8.7	12.4	3.4	2.8	3.0	35.3	33.3	44.4									
Unemployed																					
Looking for f/t work	'000	7.9	8.1	7.9	2.9	4.6	1.2	0.8	0.9	11.5	9.4	15.0									
Looking for p/t work	'000	6.0	5.5	5.1	2.0	3.1	0.6	0.3	0.7	6.5	7.7	10.2									
Total	'000	10.0	9.9	9.1	3.5	5.6	1.3	0.9	1.2	13.3	12.2	18.3									
Labour force																					
Not in labour force	'000	28.7	24.1	20.5	8.8	12.6	3.5	2.9	3.0	36.1	34.1	45.1									
Unemployment rate		24.5	21.2	22.7	8.3	12.0	3.5	3.1	3.1	31.5	36.0	42.5									
Looking for f/t work	pts	0.3	0.4	0.4	0.5	0.5	0.7	0.7	0.5	0.2	0.3	0.2									
Looking for p/t work	pts	0.5	0.5	0.6	0.6	0.7	0.6	1.0	1.1	0.5	0.3	0.2									
Total	pts	0.2	0.3	0.3	0.4	0.4	0.5	0.7	0.5	0.2	0.2	0.1									
Participation rate	pts	0.4	0.5	0.5	0.6	0.6	0.8	1.5	0.9	0.4	0.3	0.2									
Aged 15–19 years																					
Employed																					
Full time	'000	3.9	2.0	2.5	1.0	1.3	0.5	0.2	0.4	4.6	3.5	5.3									
Part time	'000	5.9	3.6	4.4	1.8	2.5	0.8	0.2	0.8	6.3	7.3	9.3									
Total	'000	6.8	4.0	5.0	1.9	2.7	0.9	0.3	0.8	7.3	7.8	10.4									
Unemployed																					
Looking for f/t work	'000	2.0	2.0	3.0	1.0	1.5	0.4	0.2	0.2	3.4	3.1	4.6									
Looking for p/t work	'000	3.6	3.3	3.3	1.0	1.9	0.3	0.1	0.5	4.7	4.1	6.3									
Total	'000	4.2	3.9	4.6	1.5	2.4	0.6	0.3	0.5	5.8	5.2	7.9									
Labour force																					
Not in labour force	'000	7.4	4.4	5.6	2.1	3.1	0.9	0.3	0.9	8.1	8.3	11.4									
Unemployment rate		9.5	6.0	7.5	3.0	4.5	1.1	0.8	1.3	10.8	9.9	15.0									
Looking for f/t work	pts	3.2	5.4	5.5	8.0	8.9	7.6	7.6	11.4	2.7	4.4	2.4									
Looking for p/t work	pts	1.9	2.1	2.3	2.5	3.0	2.6	2.4	4.0	1.7	1.2	1.0									
Total	pts	1.7	2.0	2.3	2.7	3.0	2.9	3.4	3.8	1.5	1.2	1.0									
Participation rate	pts	1.5	1.2	1.8	2.0	1.9	2.9	1.8	3.7	1.1	1.1	0.8									
Unemployment to population ratio – looking for f/t work																					
	pts	0.4	0.5	1.0	0.9	0.9	1.4	1.4	0.9	0.4	0.4	0.3									

STANDARD ERRORS *continued*

MOVEMENT ESTIMATES

The following example illustrates how to use the standard error to interpret a movement estimate. Let us say that one month the published level estimate for females employed part-time in Australia is 1,890,000; the next month the published level estimate is 1,900,000 and the associated standard error for the movement estimate is 11,900. The standard error is then used to interpret the published movement estimate of 10,000. For instance, the standard error of 11,900 indicates that:

- There are approximately two chances in three that the real movement between the two months falls within the range – 1,900 to 21,900 (10,000 + or – 11,900)
- There are approximately nineteen chances in twenty that the real movement falls within the range – 13,800 to 33,800 (10,000 + or – 23,800).

The following table shows the standard errors for this month's movement estimates.

		AUSTRALIA										
		NSW	Vic.	Qld	SA	WA	Tas.	NT	ACT	Males	Females	Persons
Aged 15 years and over												
Employed												
Full time	'000	15.3	12.4	9.4	3.9	6.6	1.7	1.8	1.8	18.7	13.9	23.9
Part time	'000	10.0	8.7	6.1	2.9	4.4	1.4	0.9	1.2	8.9	13.1	15.9
Total	'000	18.5	15.4	13.1	5.6	8.7	2.2	2.0	2.2	20.8	19.4	29.7
Unemployed												
Looking for f/t work	'000	8.8	8.2	7.3	3.0	5.0	1.2	0.8	1.1	11.7	9.5	15.2
Looking for p/t work	'000	6.1	5.4	4.9	2.0	3.3	0.6	0.4	0.9	6.5	7.9	10.1
Total	'000	10.7	10.0	8.7	3.6	5.9	1.3	0.9	1.3	13.4	12.4	18.5
Labour force	'000	19.0	15.9	13.9	6.0	9.1	2.3	2.1	2.2	21.5	20.0	30.7
Not in labour force	'000	18.5	15.2	14.0	5.9	9.1	2.2	2.0	2.3	18.4	22.1	29.9
Unemployment rate												
Looking for f/t work	pts	0.3	0.4	0.5	0.5	0.5	0.8	0.7	0.6	0.2	0.3	0.2
Looking for p/t work	pts	0.5	0.5	0.7	0.7	0.7	0.7	1.1	1.2	0.5	0.3	0.3
Total	pts	0.3	0.3	0.4	0.4	0.4	0.5	0.7	0.6	0.2	0.2	0.1
Participation rate	pts	0.3	0.3	0.4	0.4	0.4	0.5	1.1	0.7	0.2	0.2	0.2
Aged 15–19 years												
Employed												
Full time	'000	2.6	1.8	1.7	0.7	1.0	0.3	0.3	0.3	3.2	2.6	3.7
Part time	'000	4.0	3.3	2.8	1.2	1.8	0.5	0.4	0.5	4.3	5.0	6.2
Total	'000	4.5	3.6	3.1	1.3	1.9	0.6	0.5	0.6	5.0	5.2	6.8
Unemployed												
Looking for f/t work	'000	2.8	2.2	2.7	1.1	1.6	0.5	0.2	0.2	3.8	3.3	5.0
Looking for p/t work	'000	3.7	3.3	3.0	1.3	2.1	0.4	0.2	0.6	4.7	4.2	6.3
Total	'000	4.3	4.0	4.1	1.7	2.6	0.6	0.4	0.6	5.8	5.3	7.8
Labour force	'000	4.8	3.9	3.3	1.4	2.1	0.7	0.5	0.6	5.4	5.6	7.4
Not in labour force	'000	6.0	5.0	3.8	1.8	2.9	0.7	0.9	0.7	7.1	6.6	9.3
Unemployment rate												
Looking for f/t work	pts	3.9	6.1	6.0	9.3	9.3	9.0	7.7	13.7	3.1	4.9	2.6
Looking for p/t work	pts	1.9	2.3	2.4	3.1	3.2	3.0	3.5	4.5	1.8	1.3	1.1
Total	pts	1.8	2.2	2.5	3.2	3.2	3.4	3.7	4.3	1.6	1.3	1.0
Participation rate	pts	1.0	1.1	1.1	1.4	1.3	2.0	3.2	2.6	0.7	0.8	0.5
Unemployment to population ratio – looking for f/t work	pts	0.6	0.6	0.9	1.0	1.0	1.6	1.4	1.0	0.5	0.4	0.3

GLOSSARY

Actively looked for work	<p>Actively looked for work includes:</p> <ul style="list-style-type: none">■ written, telephoned or applied to an employer for work;■ had an interview with an employer for work;■ answered an advertisement for a job;■ checked or registered with an employment agency;■ taken steps to purchase or start your own business;■ advertised or tendered for work; and■ contacted friends or relatives in order to obtain work.
Actual hours of work	<p>Actual hours of work refers to a specified reference period (e.g. a week) and includes:</p> <ul style="list-style-type: none">■ hours actually worked during normal periods of work;■ time spent in addition to hours worked during normal periods of work (including overtime);■ time spent at the place of work on activities such as the preparation of the workplace, repairs and maintenance, preparation and cleaning of tools, and the preparation of receipts, time sheets and reports;■ time spent at the place of work waiting or standing by due to machinery or process breakdown, accident, lack of supplies, power or internet access, etc;■ time corresponding to short rest periods (resting time) including tea and coffee breaks or prayer breaks;■ travel time connected to work (excluding commuting time); and■ training and skills enhancement related to the job or employer. <p>Excluded are:</p> <ul style="list-style-type: none">■ hours paid for but not worked, such as paid annual leave, public holidays or paid sick leave;■ meal breaks (e.g. lunch breaks);■ paid and unpaid time 'on call';■ time spent on travel to and from work when no productive activity for the job is performed (e.g. commuting time); and■ time off during working hours to attend outside educational activities, even if it is authorised, e.g. those not connected to the job or employer. <p>For multiple job holders the LFS collects a separate measure of actual hours worked in main job and in all jobs.</p>
Attending full time education	<p>Persons aged 15-24 years enrolled at secondary or high school or enrolled as a full time student at a Technical and Further Education (TAFE) college, university, or other educational institution in the reference week.</p>
Attending school	<p>Persons aged 15-19 years enrolled at secondary or high school in the reference week.</p>
Attending tertiary educational institution full time	<p>Persons aged 15-24 years enrolled full time at a TAFE college, university, or other educational institution in the reference week, except those persons aged 15-19 years who were still attending school.</p>
Civilian population aged 15 years and over	<p>All usual residents of Australia aged 15 years and over except members of the permanent defence forces, certain diplomatic personnel of overseas governments customarily excluded from census and estimated population counts, overseas residents in Australia, and members of non-Australian defence forces (and their dependants) stationed in Australia.</p>
Composite Estimation	<p>The estimation methodology used in the Labour Force Survey. Composite Estimation uses sample responses from nearby months as well as from the reference month to derive estimates for the reference month. This approach achieves gains in efficiency by exploiting the high similarity between the responses provided by the same respondent in previous months. For details see Information Paper: Forthcoming Changes to Labour Force Statistics, 2007 (cat. no. 6292.0).</p>
Employed	<p>All persons aged 15 years and over who met one of the following criteria during the</p>

GLOSSARY *continued*

Employed <i>continued</i>	<p>reference week:</p> <ul style="list-style-type: none">■ Worked for one hour or more for pay, profit, commission or payment in kind, in a job or business or on a farm (employees and owner managers of incorporated or unincorporated enterprises).■ Worked for one hour or more without pay in a family business or on a farm (contributing family workers).■ Were employees who had a job but were not at work and were:<ul style="list-style-type: none">■ away from work for less than four weeks up to the end of the reference week; or■ away from work for more than four weeks up to the end of the reference week and received pay for some or all of the four week period to the end of the reference week; or■ away from work as a standard work or shift arrangement; or■ on strike or locked out; or■ on workers' compensation and expected to return to their job.■ Were owner managers who had a job, business or farm, but were not at work.
Employed full-time	Includes employed persons who usually worked 35 hours or more a week (in all jobs) and those who, although usually working less than 35 hours a week, worked 35 hours or more during the reference week.
Employed part-time	Includes employed persons who usually worked less than 35 hours a week (in all jobs) and either did so during the reference week, or were not at work in the reference week.
Employment to population ratio	For any group, the number of employed persons expressed as a percentage of the civilian population in the same group.
Estimated resident population (ERP)	Estimated resident population (ERP), is Australia's official measure of the population of Australia and is based on the concept of usual residence. It refers to all people, regardless of nationality, citizenship or legal status, who usually live in Australia, with the exception of foreign diplomatic personnel and their families. It includes usual residents who are overseas for fewer than 12 months. It excludes overseas visitors who are in Australia for fewer than 12 months. Refer to Australian Demographic Statistics (cat. no. 3101.0).
Flow estimates	Flow estimates are a measure of activity over a given period. For example, monthly hours worked in all jobs is a measure of the total number of hours worked in a calendar month.
Gross flows	<p>The matching of respondents who report in consecutive months enables analysis of the transition of individuals between the different labour force status classifications, referred to as the matched sample. The transition counts between the different labour force status classifications from one point in time to the next are commonly referred to as gross flows.</p> <p>The figures presented in gross flows are presented in original terms only and do not align with published labour force estimates. The gross flows figures are derived from the matched sample between consecutive months, which after taking account of the sample rotation and varying non-response in each month is approximately 80 percent of the sample.</p> <p>Caution should be exercised when analysing these gross flows data due to:</p> <ul style="list-style-type: none">■ the figures presented sum to approximately 80 percent of the population values as the gross flows data are based on the matched sample only;■ there is no adjustment applied to account for changes due to seasonal patterns (referred to commonly as seasonal adjustment); and■ the estimates of relative sizes of each transition class are subject to bias due to the matched sample being a non-representative sample.
Labour force	For any group, persons who were employed or unemployed, as defined.

GLOSSARY *continued*

Labour force status	A classification of the civilian population aged 15 years and over into employed, unemployed or not in the labour force, as defined. The definitions conform closely to the international standard definitions adopted by the International Conferences of Labour Statisticians.
Long-term unemployed	The number of persons unemployed for 52 weeks or over.
Long-term unemployment ratio	The number of long-term unemployed persons, expressed as a percentage of the total unemployed population.
Market sector	The market sector is an industry grouping comprising the following industries: Agriculture, forestry and fishing; Mining; Manufacturing; Electricity, gas, water and waste services; Construction; Wholesale trade; Retail trade; Accommodation and food services; Transport, postal and warehousing; Information media and telecommunications; Finance and insurance services; Rental, hiring and real estate services; Professional, scientific and technical services; Administrative and support services; Arts and recreation services; and Other services. Refer to Australian National Accounts: Concepts, Sources and Methods (cat. no. 5216.0).
Non-market Sector	The non-market sector is an industry grouping comprising the following industries: Education and training; Public administration & safety; and Health care and social assistance. Refer to Australian National Accounts: Concepts, Sources and Methods (cat. no. 5216.0).
Monthly hours worked in all jobs	<p>Monthly hours worked in all jobs measures the total number of actual hours worked by employed persons in a calendar month. It differs from the actual hours worked estimates (and the usual hours worked estimates) since these refer only to the hours worked in the reference week.</p> <p>The methodology used to produce monthly hours worked in all jobs means that these are synthetic estimates. Seasonally adjusted and trend estimates of monthly hours worked in all jobs are available for the period July 1978 onwards.</p> <p>Further information on the methodology used to produce the monthly hours worked in all jobs estimates is available on the ABS website in Information Paper: Expansion of Hours Worked Estimates from the Labour Force Survey (cat. no. 6290.0.55.001).</p> <p>Actual and usual hours worked cannot be aggregated across time to produce either quarterly or annual estimates as they relate to only a single week in the month. In contrast, monthly hours worked in all jobs estimates are a true monthly measure, and may be aggregated across time to produce both quarterly and annual estimates.</p>
Not in labour force	Persons who were not in the categories employed or unemployed, as defined. They include people who undertook unpaid household duties or other voluntary work only, were retired, voluntarily inactive and those permanently unable to work.
Participation rate	For any group, the labour force expressed as a percentage of the civilian population aged 15 years and over in the same group.
Response rate	The number of fully responding dwellings expressed as a percentage of the total number of dwellings excluding sample loss. Examples of sample loss include: dwellings where all persons are out of scope and/or coverage; vacant dwellings; dwellings under construction; dwellings converted to non-dwellings; derelict dwellings; and demolished dwellings.
Seasonally adjusted series	A time series of estimates with the estimated effects of normal seasonal variation removed. See Explanatory Notes for more detail.
Stock estimates	Stock estimates are a measure of certain attributes at a point in time and can be thought of as stocktakes. For example, the total number of employed persons is an account of the number of people who were considered employed in the Labour Force Survey reference week.

GLOSSARY *continued*

Trend series	A smoothed seasonally adjusted series of estimates. See Explanatory Notes for more detail.
Underemployment rate (proportion of labour force)	The number of underemployed workers expressed as a percentage of the labour force.
Underemployment ratio (proportion of employed)	The number of underemployed workers expressed as a percentage of total employed persons.
Underemployed workers	Employed persons aged 15 years and over who want, and are available for, more hours of work than they currently have. They comprise: <ul style="list-style-type: none">■ persons employed part time who want to work more hours and are available to start work with more hours, either in the reference week or in the four weeks subsequent to the survey; or■ persons employed full time who worked part time hours in the reference week for economic reasons (such as being stood down or insufficient work being available). It is assumed that these people wanted to work full time in the reference week and would have been available to do so.
Underutilisation rate	The sum of the number of persons unemployed and the number of persons in underemployment, expressed as a proportion of the labour force.
Unemployed	Persons aged 15 years and over who were not employed during the reference week, and: <ul style="list-style-type: none">■ had actively looked for full time or part time work at any time in the four weeks up to the end of the reference week and were available for work in the reference week; or■ were waiting to start a new job within four weeks from the end of the reference week and could have started in the reference week if the job had been available then.
Unemployed looked for full time work	Unemployed persons who: <ul style="list-style-type: none">■ actively looked for full time work; or■ were waiting to start a new full time job.
Unemployed looked for only part time work	Unemployed persons who: <ul style="list-style-type: none">■ actively looked for part time work only; or■ were waiting to start a new part time job.
Unemployment rate	For any group, the number of unemployed persons expressed as a percentage of the labour force in the same group.
Usual hours of work	Usual hours of work refers to a typical period rather than the hours worked in a specified reference period. The concept of usual hours applies both to persons at work and to persons temporarily absent from work, and is defined as the hours worked during a typical week or day. Actual hours worked (for a specific reference period) may differ from usual hours worked due to illness, vacation, strike, overtime work, a change of job, or similar reasons.

FOR MORE INFORMATION . . .

INTERNET **www.abs.gov.au** the ABS website is the best place for data from our publications and information about the ABS.

INFORMATION AND REFERRAL SERVICE

Our consultants can help you access the full range of information published by the ABS that is available free of charge from our website. Information tailored to your needs can also be requested as a 'user pays' service. Specialists are on hand to help you with analytical or methodological advice.

PHONE 1300 135 070

EMAIL client.services@abs.gov.au

FAX 1300 135 211

POST Client Services, ABS, GPO Box 796, Sydney NSW 2001

FREE ACCESS TO STATISTICS

All statistics on the ABS website can be downloaded free of charge.

WEB ADDRESS www.abs.gov.au